

**Product Name: ATF-1 Rabbit Polyclonal Antibody**  
**Catalog #: APRab07262**



## Summary

<b>Production Name</b>	ATF-1 Rabbit Polyclonal Antibody
<b>Description</b>	Rabbit Polyclonal Antibody
<b>Host</b>	Rabbit
<b>Application</b>	IHC, WB,
<b>Reactivity</b>	Human, Mouse

## Performance

<b>Conjugation</b>	Unconjugated
<b>Modification</b>	Unmodified
<b>Isotype</b>	IgG
<b>Clonality</b>	Polyclonal
<b>Form</b>	Liquid
<b>Storage</b>	Store at 4°C short term. Aliquot and store at -20°C long term. Avoid freeze/thaw cycles.
<b>Buffer</b>	Liquid in PBS containing 50% glycerol, 0.5% BSA and 0.02% New type preservative N.
<b>Purification</b>	Affinity purification

## Immunogen

<b>Gene Name</b>	ATF1
<b>Alternative Names</b>	ATF1; Cyclic AMP-dependent transcription factor ATF-1; cAMP-dependent transcription factor ATF-1; Activating transcription factor 1; Protein TREB36
<b>Gene ID</b>	466.0
<b>SwissProt ID</b>	P18846. The antiserum was produced against synthesized peptide derived from human ATF1. AA range:31-80

## Application

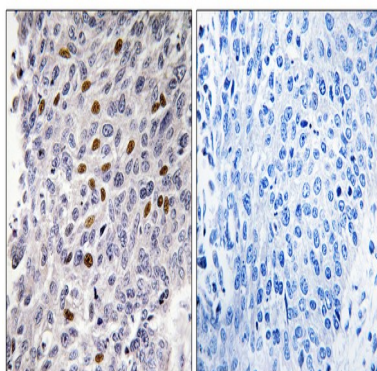
<b>Dilution Ratio</b>	WB 1:500 - 1:2000. IHC 1:100 - 1:300. ELISA: 1:5000..
<b>Molecular Weight</b>	29kD

## Background

activating transcription factor 1(ATF1) Homo sapiens This gene encodes an activating transcription factor, which belongs to the ATF subfamily and bZIP (basic-region leucine zipper) family. It influences cellular physiologic processes by regulating the expression of downstream target genes, which are related to growth, survival, and other cellular activities. This protein is phosphorylated at serine 63 in its kinase-inducible domain by serine/threonine kinases, cAMP-dependent protein kinase A, calmodulin-dependent protein kinase I/II, mitogen- and stress-activated protein kinase and cyclin-dependent kinase 3 (cdk-3). Its phosphorylation enhances its transactivation and transcriptional activities, and enhances cell transformation. Fusion of this gene and FUS on chromosome 16 or EWSR1 on chromosome 22 induced by translocation generates chimeric proteins in angiomatoid fibrous histiocytoma and clear cell sarcoma. This gene has a pseudogene on chromosome 16. A chromosomal aberration involving ATF1 is associated with angiomatoid fibrous histiocytoma (AFH) [MIM:612160]. Translocation t(12;16)(q13;p11.2) with FUS generates a chimeric ATF1/FUS protein.,disease:A chromosomal aberration involving ATF1 is associated with angiomatoid fibrous histiocytoma (AFH) [MIM:612160]. Translocation t(12;22)(q13;q12) with EWSR1 generates a chimeric ATF1/EWSR1 protein.,function:This protein binds the cAMP response element (CRE) (consensus: 5'-GTGACGT[AC][AG]-3'), a sequence present in many viral and cellular promoters. Binds to the Tax-responsive element (TRE) of HTLV-I. Mediates PKA-induced stimulation of CRE-reporter genes.,similarity:Belongs to the bZIP family. ATF subfamily.,similarity:Contains 1 bZIP domain.,similarity:Contains 1 KID (kinase-inducible) domain.,subunit:Binds DNA as a dimer.,

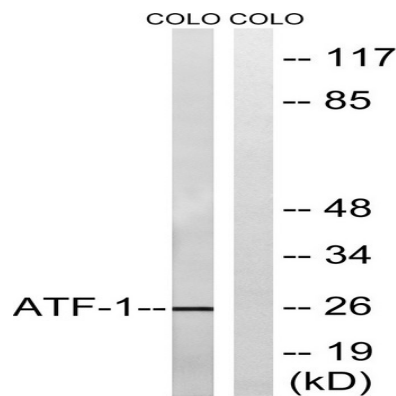
## Research Area

## Image Data

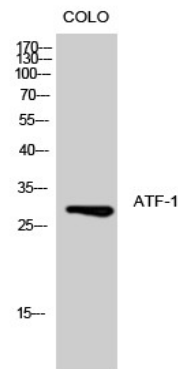


Immunohistochemistry analysis of paraffin-embedded human lung carcinoma tissue, using ATF1 Antibody. The picture on the right is blocked with the synthesized peptide.

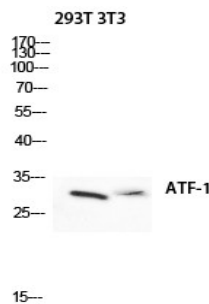
**Product Name: ATF-1 Rabbit Polyclonal Antibody**  
**Catalog #: APRab07262**



Western blot analysis of lysates from COLO cells, using ATF1 Antibody. The lane on the right is blocked with the synthesized peptide.



Western Blot analysis of COLO cells using ATF-1 Polyclonal Antibody diluted at 1 : 500 cells nucleus extracted by Minute TM Cytoplasmic and Nuclear Fractionation kit (SC-003, Inventbiotech, MN, USA) .



Western blot analysis of 293T 3T3 lysis using ATF-1 antibody. Antibody was diluted at 1:500 cells nucleus extracted by Minute TM Cytoplasmic and Nuclear Fractionation kit (SC-003, Inventbiotech, MN, USA) .

## Note

For research use only.