

---

## Summary

|                        |  |
|------------------------|--|
| <b>Production Name</b> | AR- $\alpha$ 1A Rabbit Polyclonal Antibody |
| <b>Description</b>     | Rabbit Polyclonal Antibody                 |
| <b>Host</b>            | Rabbit                                     |
| <b>Application</b>     | IF, WB, ELISA                              |
| <b>Reactivity</b>      | Human, Mouse, Rat                          |

## Performance

|                     |  |
|---------------------|--|
| <b>Conjugation</b>  | Unconjugated   |
| <b>Modification</b> | Unmodified   |
| <b>Isotype</b>      | IgG  |
| <b>Clonality</b>    | Polyclonal   |
| <b>Form</b>         | Liquid   |
| <b>Storage</b>      | Store at 4°C short term. Aliquot and store at -20°C long term. Avoid freeze/thaw cycles. |
| <b>Buffer</b>       | Liquid in PBS containing 50% glycerol, 0.5% BSA and 0.02% New type preservative N.       |
| <b>Purification</b> | Affinity purification  |

## Immunogen

|                          |  |
|--------------------------|--|
| <b>Gene Name</b>         | ADRA1A   |
| <b>Alternative Names</b> | ADRA1A; ADRA1C; Alpha-1A adrenergic receptor; Alpha-1A adrenoreceptor; Alpha-1A adrenoceptor; Alpha-1C adrenergic receptor; Alpha-adrenergic receptor 1c |
| <b>Gene ID</b>           | 148.0  |
| <b>SwissProt ID</b>      | P35348. The antiserum was produced against synthesized peptide derived from human ADRA1A. AA range: 136-185  |

## Application

|                         |   |
|-------------------------|---|
| <b>Dilution Ratio</b>   | WB 1:500 - 1:2000. IF 1:200 - 1:1000. ELISA: 1:10000. Not yet tested in other applications. |
| <b>Molecular Weight</b> | 51kD  |

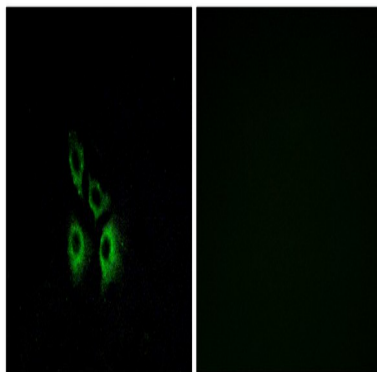
## Background

Alpha-1-adrenergic receptors (alpha-1-ARs) are members of the G protein-coupled receptor superfamily. They activate mitogenic responses and regulate growth and proliferation of many cells. There are 3 alpha-1-AR subtypes: alpha-1A, -1B and -1D, all of which signal through the Gq/11 family of G-proteins and different subtypes show different patterns of activation. This gene encodes alpha-1A-adrenergic receptor. Alternative splicing of this gene generates four transcript variants, which encode four different isoforms with distinct C-termini but having similar ligand binding properties. [provided by RefSeq, Jul 2008],function:This alpha-adrenergic receptor mediates its action by association with G proteins that activate a phosphatidylinositol-calcium second messenger system. Its effect is mediated by G(q) and G(11) proteins.,PTM:Carboxyl-terminal Ser or Thr residues may be phosphorylated.,similarity:Belongs to the G-protein coupled receptor 1 family.,tissue specificity:Heart, brain, liver and prostate, but not in kidney, lung, adrenal, aorta and pituitary. Isoform 4 is the most abundant isoform expressed in the prostate with high levels also detected in liver and heart.,

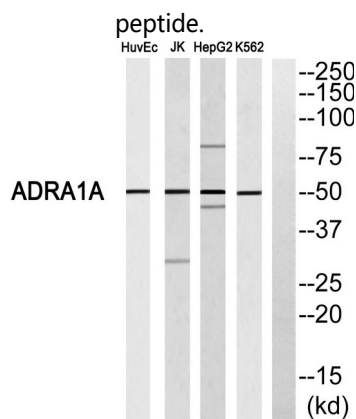
## Research Area

Calcium;Neuroactive ligand-receptor interaction;Vascular smooth muscle contraction;

## Image Data



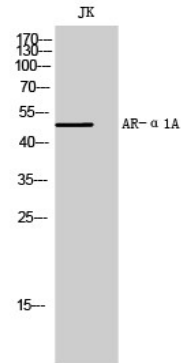
Immunofluorescence analysis of A549 cells, using ADRA1A Antibody. The picture on the right is blocked with the synthesized



**Product Name: AR- $\alpha$ 1A Rabbit Polyclonal Antibody**  
**Catalog #: APRab07189**



Western blot analysis of ADRA1A Antibody. The lane on the right is blocked with the ADRA1A peptide.



Western Blot analysis of JK cells using AR- $\alpha$ 1A Polyclonal Antibody

**Note**

For research use only.