

**Product Name: Arylsulfatase I Rabbit Polyclonal Antibody**  
**Catalog #: APRab07187**

---

## Summary

<b>Production Name</b>	Arylsulfatase I Rabbit Polyclonal Antibody
<b>Description</b>	Rabbit Polyclonal Antibody
<b>Host</b>	Rabbit
<b>Application</b>	IF, WB, IHC, ELISA
<b>Reactivity</b>	Human, Monkey

## Performance

<b>Conjugation</b>	Unconjugated
<b>Modification</b>	Unmodified
<b>Isotype</b>	IgG
<b>Clonality</b>	Polyclonal
<b>Form</b>	Liquid
<b>Storage</b>	Store at 4°C short term. Aliquot and store at -20°C long term. Avoid freeze/thaw cycles.
<b>Buffer</b>	Liquid in PBS containing 50% glycerol, 0.5% BSA and 0.02% New type preservative N.
<b>Purification</b>	Affinity purification

## Immunogen

<b>Gene Name</b>	ARSI
<b>Alternative Names</b>	ARSI; Arylsulfatase I; ASI
<b>Gene ID</b>	340075.0
<b>SwissProt ID</b>	Q5FYB1. The antiserum was produced against synthesized peptide derived from human ARSI. AA range: 311-360

## Application

<b>Dilution Ratio</b>	WB 1:500 - 1:2000. IHC 1:100 - 1:300. IF 1:200 - 1:1000. ELISA: 1:40000. Not yet tested in other applications.
<b>Molecular Weight</b>	64kD

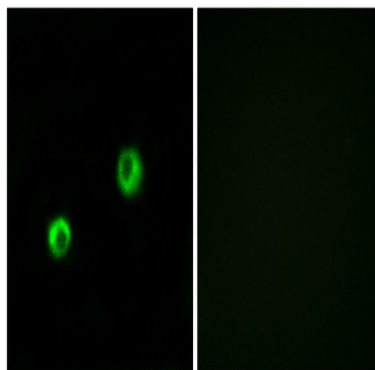
**Product Name: Arylsulfatase I Rabbit Polyclonal Antibody**  
**Catalog #: APRab07187**

## Background

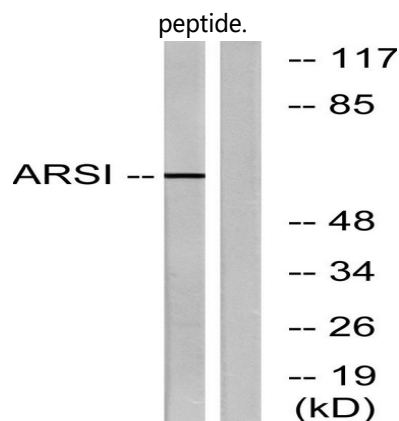
This gene encodes a protein that belongs to a large family of sulfatases that hydrolyze sulfate esters and sulfamates. Members of this family play a role in several cellular processes, including hormone synthesis, cell signaling in development and degradation of macromolecules. The protein encoded by this gene is thought to be secreted, and to function in extracellular space. [provided by RefSeq, Jul 2016],cofactor: Binds 1 calcium ion per subunit.,PTM: The conversion to 3-oxoalanine (also known as C-formylglycine, FGly), of a serine or cysteine residue in prokaryotes and of a cysteine residue in eukaryotes, is critical for catalytic activity.,similarity: Belongs to the sulfatase family.,

## Research Area

## Image Data

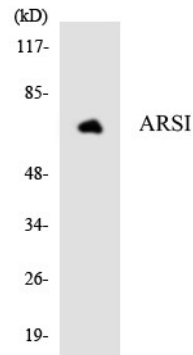


Immunofluorescence analysis of MCF7 cells, using ARSI Antibody. The picture on the right is blocked with the synthesized

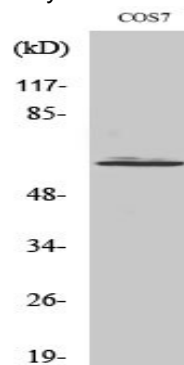


Western blot analysis of lysates from COS7 cells, using ARSI Antibody. The lane on the right is blocked with the synthesized peptide.

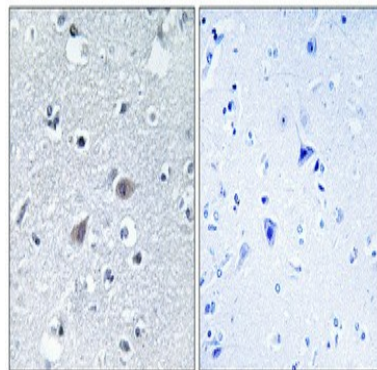
**Product Name: Arylsulfatase I Rabbit Polyclonal Antibody**  
**Catalog #: APRab07187**



Western blot analysis of the lysates from HepG2 cells using ARSI antibody.



Western Blot analysis of various cells using Arylsulfatase I Polyclonal Antibody



Immunohistochemical analysis of paraffin-embedded Human brain. Antibody was diluted at 1:100 (4°, overnight) . High-pressure and temperature Tris-EDTA, pH 8.0 was used for antigen retrieval. Negative control (right) obtained from antibody was pre-absorbed by immunogen peptide.

## Note

For research use only.