

Product Name: Artn Rabbit Polyclonal Antibody
Catalog #: APRab07178



Summary

Production Name	Artn Rabbit Polyclonal Antibody
Description	Rabbit Polyclonal Antibody
Host	Rabbit
Application	IHC,ELISA
Reactivity	Human,Rat,Mouse

Performance

Conjugation	Unconjugated
Modification	Unmodified
Isotype	IgG
Clonality	Polyclonal
Form	Liquid
Storage	Store at 4°C short term. Aliquot and store at -20°C long term. Avoid freeze/thaw cycles.
Buffer	Liquid in PBS containing 50% glycerol, 0.5% BSA and 0.02% New type preservative N.
Purification	Affinity purification

Immunogen

Gene Name	ARTN EVN
Alternative Names	Artemin (Enovin;Neublastin)
Gene ID	9048.0
SwissProt ID	Q5T4W7.Synthetic peptide from human protein at AA range: 101-150

Application

Dilution Ratio IHC 1:50-200 ELISA 1:10000-20000

Molecular Weight

Background

This gene encodes a secreted ligand of the glial cell line-derived neurotrophic factor (GDNF) subfamily and TGF-beta (transforming growth factor-beta) superfamily of proteins. Ligands of this family bind various TGF-beta receptors leading to

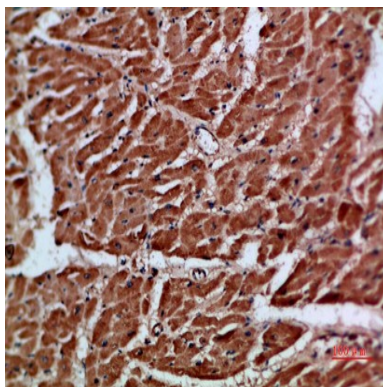
Product Name: Artn Rabbit Polyclonal Antibody
Catalog #: APRab07178



recruitment and activation of SMAD family transcription factors that regulate gene expression. The encoded preproprotein is proteolytically processed to generate each subunit of the disulfide-linked homodimer. This protein signals through the RET receptor and GFR alpha 3 coreceptor, and supports the survival of a number of peripheral neuron populations and at least one population of dopaminergic CNS neurons. This protein has also been shown to promote tumor growth, metastasis, and drug resistance in mammary carcinoma. [provided by RefSeq, Aug 2016],developmental stage:Expressed during embryogenesis. High level expression seen in fetal kidney and lung while a low level expression seen in the fetal brain.,function:Ligand for the GFR-alpha-3-RET receptor complex but can also activate the GFR-alpha-1-RET receptor complex. Supports the survival of sensory and sympathetic peripheral neurons in culture and also supports the survival of dopaminergic neurons of the ventral mid-brain.,similarity:Belongs to the TGF-beta family. GDNF subfamily.,subunit:Homodimer; disulfide-linked.,tissue specificity:Ubiquitous. Expressed at high levels in peripheral tissues including prostate, placenta, pancreas, heart, kidney, pituitary gland, lung and testis. Expressed at low levels in the brain.,

Research Area

Image Data



Immunohistochemical analysis of paraffin-embedded human-heart, antibody was diluted at 1:200

Note

For research use only.