

Summary

Production Name	Arrestin-C Rabbit Polyclonal Antibody
Description	Rabbit Polyclonal Antibody
Host	Rabbit
Application	WB
Reactivity	Human,Rat,Mouse

Performance

Conjugation	Unconjugated
Modification	Unmodified
Isotype	IgG
Clonality	Polyclonal
Form	Liquid
Storage	Store at 4°C short term. Aliquot and store at -20°C long term. Avoid freeze/thaw cycles.
Buffer	Liquid in PBS containing 50% glycerol, 0.5% BSA and 0.02% New type preservative N.
Purification	Affinity purification

Immunogen

Gene Name	ARR3
Alternative Names	ARR3; ARRX; CAR; Arrestin-C; Cone arrestin; C-arrestin; cArr; Retinal cone arrestin-3; X-arrestin
Gene ID	407.0
SwissProt ID	P36575.The antiserum was produced against synthesized peptide derived from human ARRC. AA range:339-388

Application

Dilution Ratio	WB 1:500-1:2000. ELISA: 1:5000.
Molecular Weight	40kD

Background

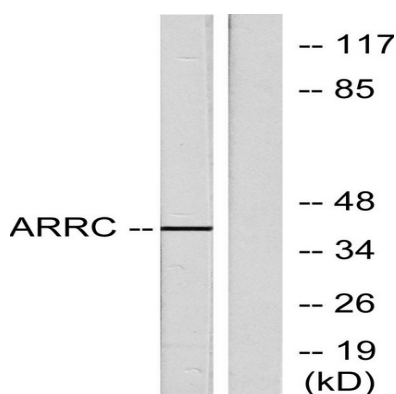
Product Name: Arrestin-C Rabbit Polyclonal Antibody
Catalog #: APRab07169



The protein encoded by this gene is a non-visual arrestin which binds to agonist-activated, phosphorylated G protein-coupled receptors. This binding uncouples the receptor from the heterotrimeric G protein, resulting in termination of the G protein-coupled receptor signaling. The encoded protein also is a part of the centrosome, interacting with gamma-tubulin to help regulate proper centrosome function. [provided by RefSeq, May 2016],function:May play a role in an as yet undefined retina-specific signal transduction. Could binds to photoactivated-phosphorylated red/green opsins.,similarity:Belongs to the arrestin family.,tissue specificity:Inner and outer segments, and the inner plexiform regions of the retina.,

Research Area

Image Data



Western blot analysis of lysates from LOVO cells, using ARRC Antibody. The lane on the right is blocked with the synthesized peptide.

Note

For research use only.