

Summary

Production Name	Arrdc4 Rabbit Polyclonal Antibody
Description	Rabbit Polyclonal Antibody
Host	Rabbit
Application	WB
Reactivity	Human,Rat,Mouse

Performance

Conjugation	Unconjugated
Modification	Unmodified
Isotype	IgG
Clonality	Polyclonal
Form	Liquid
Storage	Store at 4°C short term. Aliquot and store at -20°C long term. Avoid freeze/thaw cycles.
Buffer	Liquid in PBS containing 50% glycerol, 0.5% BSA and 0.02% New type preservative N.
Purification	Affinity purification

Immunogen

Gene Name	ARRDC4
Alternative Names	ARRDC4; Arrestin domain-containing protein 4
Gene ID	91947.0
SwissProt ID	Q8NCT1.The antiserum was produced against synthesized peptide derived from human ARRDC4. AA range:127-176

Application

Dilution Ratio	WB 1:500-1:2000. ELISA: 1:20000.
Molecular Weight	45kD

Background

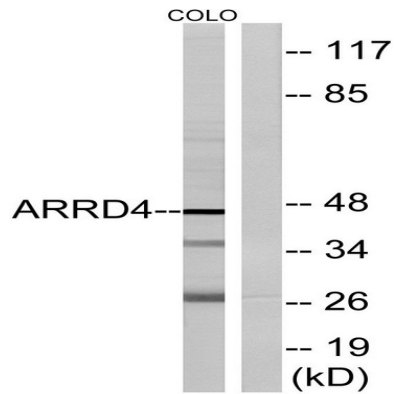
similarity:Belongs to the arrestin family.,similarity:Belongs to the arrestin family.,

Product Name: Arrdc4 Rabbit Polyclonal Antibody
Catalog #: APRab07168



Research Area

Image Data



Western blot analysis of lysates from COLO cells, using ARRDC4 Antibody. The lane on the right is blocked with the synthesized peptide.

Note

For research use only.