
Summary

Production Name	ARP-1 Rabbit Polyclonal Antibody
Description	Rabbit Polyclonal Antibody
Host	Rabbit
Application	IF, WB, IHC
Reactivity	Human, Mouse, Rat

Performance

Conjugation	Unconjugated
Modification	Unmodified
Isotype	IgG
Clonality	Polyclonal
Form	Liquid
Storage	Store at 4°C short term. Aliquot and store at -20°C long term. Avoid freeze/thaw cycles.
Buffer	Liquid in PBS containing 50% glycerol, 0.5% BSA and 0.02% New type preservative N.
Purification	Affinity purification

Immunogen

Gene Name	NR2F2
Alternative Names	NR2F2; ARP1; TFCOUP2; COUP transcription factor 2; COUP-TF2; Apolipoprotein A-I regulatory protein 1; ARP-1; COUP transcription factor II; COUP-TF II; Nuclear receptor subfamily 2 group F member 2
Gene ID	7026.0
SwissProt ID	P24468. The antiserum was produced against synthesized peptide derived from human COT2. AA range: 1-50

Application

Dilution Ratio	WB 1:500 - 1:2000. IHC 1:100 - 1:300. IF 1:200 - 1:1000. ELISA: 1:10000. Not yet tested in other applications.
-----------------------	--

Product Name: ARP-1 Rabbit Polyclonal Antibody
Catalog #: APRab07156



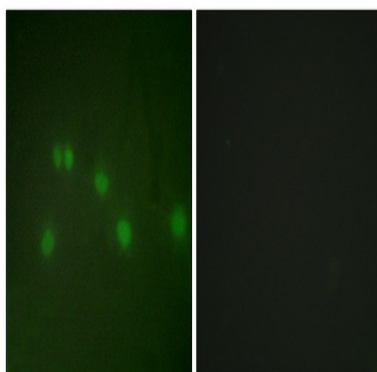
Molecular Weight 45kD

Background

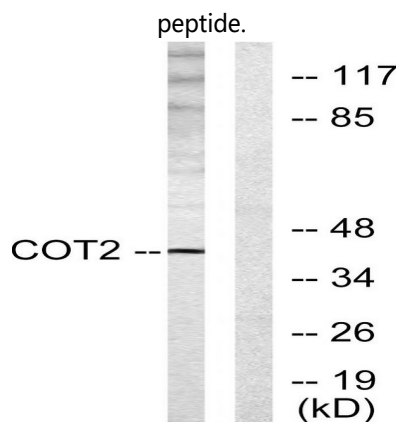
This gene encodes a member of the steroid thyroid hormone superfamily of nuclear receptors. The encoded protein is a ligand inducible transcription factor that is involved in the regulation of many different genes. Alternate splicing results in multiple transcript variants. [provided by RefSeq, Mar 2010],function:Regulation of the apolipoprotein A-I gene transcription. Binds to DNA site A.,similarity:Belongs to the nuclear hormone receptor family.,similarity:Belongs to the nuclear hormone receptor family. NR2 subfamily.,similarity:Contains 1 nuclear receptor DNA-binding domain.,subunit:Interacts with SQSTM1 (By similarity). Binds DNA as a homodimer.,tissue specificity:Found in all tissues.,

Research Area

Image Data

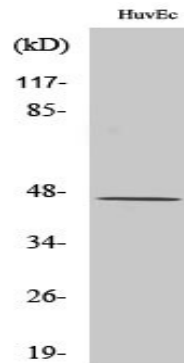


Immunofluorescence analysis of HUVEC cells, using COT2 Antibody. The picture on the right is blocked with the synthesized peptide.

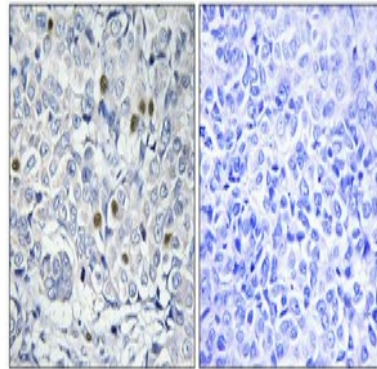


Western blot analysis of lysates from HUVEC cells, using COT2 Antibody. The lane on the right is blocked with the synthesized peptide.

Product Name: ARP-1 Rabbit Polyclonal Antibody
Catalog #: APRab07156



Western Blot analysis of various cells using ARP-1 Polyclonal Antibody cells nucleus extracted by Minute TM Cytoplasmic and Nuclear Fractionation kit (SC-003, Inventbiotech, MN, USA) .



Immunohistochemical analysis of paraffin-embedded Human breast cancer. Antibody was diluted at 1:100 (4°, overnight) . High-pressure and temperature Tris-EDTA, pH8.0 was used for antigen retrieval. Negative control (right) obtained from antibody was pre-absorbed by immunogen peptide.

Note

For research use only.