

Summary

Production Name	ARM CX2 Rabbit Polyclonal Antibody
Description	Rabbit Polyclonal Antibody
Host	Rabbit
Application	IF, WB,
Reactivity	Human, Mouse, Rat

Performance

Conjugation	Unconjugated
Modification	Unmodified
Isotype	IgG
Clonality	Polyclonal
Form	Liquid
Storage	Store at 4°C short term. Aliquot and store at -20°C long term. Avoid freeze/thaw cycles.
Buffer	Liquid in PBS containing 50% glycerol, 0.5% BSA and 0.02% New type preservative N.
Purification	Affinity purification

Immunogen

Gene Name	ARM CX2
Alternative Names	ARM CX2; ALEX2; KIAA0512; Armadillo repeat-containing X-linked protein 2; ARM protein lost in epithelial cancers on chromosome X 2; Protein ALEX2
Gene ID	9823.0
SwissProt ID	Q7L311. The antiserum was produced against synthesized peptide derived from human ARM CX2. AA range: 321-370

Application

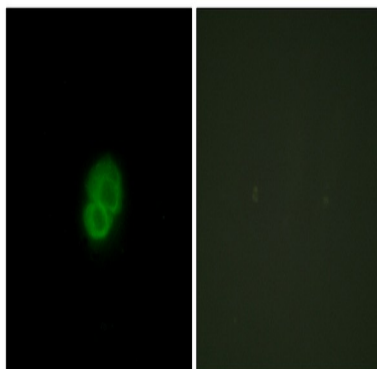
Dilution Ratio	WB 1:500 - 1:2000. IF 1:200 - 1:1000. ELISA: 1:20000. Not yet tested in other applications.
Molecular Weight	65kD

Background

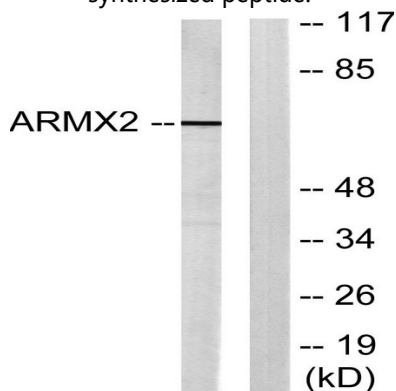
armadillo repeat containing, X-linked 2(ARMX2) Homo sapiens This gene encodes a protein containing a potential N-terminal transmembrane domain and multiple armadillo (arm) repeats. Proteins containing arm repeats are involved in development, maintenance of tissue integrity, and tumorigenesis. This gene is located in a cluster of related genes on chromosome X. There is a pseudogene for this gene on chromosome 7. Alternative splicing in the 5' UTR results in multiple transcript variants encoding the same protein. [provided by RefSeq, Aug 2013],similarity:Contains 3 ARM repeats.,tissue specificity:Expressed at high levels ovary, heart, testis, prostate, brain, spleen and colon. Expressed at very low levels in liver and thymus. Not expressed in peripheral blood leukocytes. Not expressed in pancreas and ovarian carcinomas.,

Research Area

Image Data



Immunofluorescence analysis of HepG2 cells, using ARMX2 Antibody. The picture on the right is blocked with the synthesized peptide.

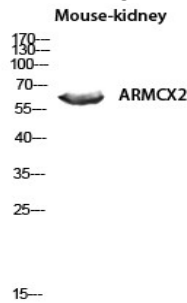


Western blot analysis of lysates from 293 cells, using ARMX2 Antibody. The lane on the right is blocked with the synthesized peptide.

Product Name: ARM CX2 Rabbit Polyclonal Antibody
Catalog #: APRab07150



Western Blot analysis of various cells using ARM CX2 Polyclonal Antibody diluted at 1 : 1000



Western blot analysis of Mouse-kidney lysis using ARM CX2 antibody. Antibody was diluted at 1:1000

Note

For research use only.