

---

## Summary

<b>Production Name</b>	ARMC6 Rabbit Polyclonal Antibody
<b>Description</b>	Rabbit Polyclonal Antibody
<b>Host</b>	Rabbit
<b>Application</b>	IF, WB, ELISA
<b>Reactivity</b>	Human, Mouse, Rat

## Performance

<b>Conjugation</b>	Unconjugated
<b>Modification</b>	Unmodified
<b>Isotype</b>	IgG
<b>Clonality</b>	Polyclonal
<b>Form</b>	Liquid
<b>Storage</b>	Store at 4°C short term. Aliquot and store at -20°C long term. Avoid freeze/thaw cycles.
<b>Buffer</b>	Liquid in PBS containing 50% glycerol, 0.5% BSA and 0.02% New type preservative N.
<b>Purification</b>	Affinity purification

## Immunogen

<b>Gene Name</b>	ARMC6
<b>Alternative Names</b>	ARMC6; Armadillo repeat-containing protein 6
<b>Gene ID</b>	93436.0
<b>SwissProt ID</b>	Q6NXE6. The antiserum was produced against synthesized peptide derived from human ARMC6. AA range: 431-480

## Application

<b>Dilution Ratio</b>	WB 1:500 - 1:2000. IF 1:200 - 1:1000. ELISA: 1:40000. Not yet tested in other applications.
<b>Molecular Weight</b>	54kD

**Product Name: ARMC6 Rabbit Polyclonal Antibody**  
**Catalog #: APRab07147**



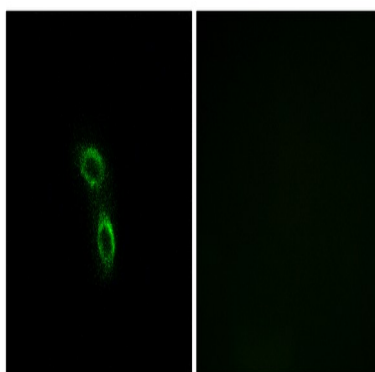
## Background

The function of this gene's protein product has not been determined. A related protein in mouse suggests that this protein has a conserved function. Two transcript variants encoding different isoforms have been found for this gene.

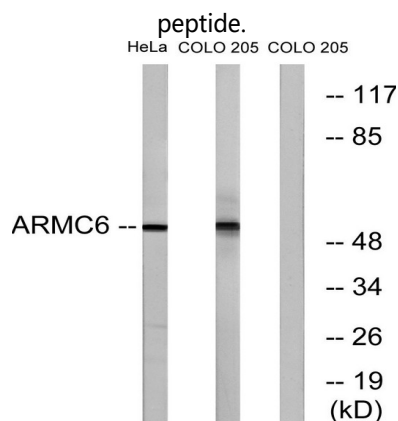
[provided by RefSeq, Nov 2010],PTM:Phosphorylated upon DNA damage, probably by ATM or ATR.,similarity:Belongs to the ARMC6 family.,similarity:Contains 4 ARM repeats.,

## Research Area

## Image Data

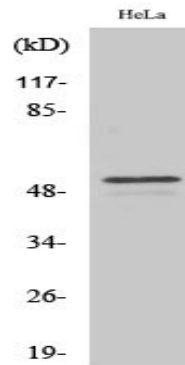


Immunofluorescence analysis of A549 cells, using ARMC6 Antibody. The picture on the right is blocked with the synthesized



Western blot analysis of lysates from HeLa and COLO cells, using ARMC6 Antibody. The lane on the right is blocked with the synthesized peptide.

**Product Name: ARMC6 Rabbit Polyclonal Antibody**  
**Catalog #: APRab07147**



Western Blot analysis of various cells using ARMC6 Polyclonal Antibody

**Note**

For research use only.