
Summary

Production Name	ARHGEF19 Rabbit Polyclonal Antibody
Description	Rabbit Polyclonal Antibody
Host	Rabbit
Application	WB,IHC,ELISA
Reactivity	Human,Rat,Mouse

Performance

Conjugation	Unconjugated
Modification	Unmodified
Isotype	IgG
Clonality	Polyclonal
Form	Liquid
Storage	Store at 4°C short term. Aliquot and store at -20°C long term. Avoid freeze/thaw cycles.
Buffer	Liquid in PBS containing 50% glycerol, 0.5% BSA and 0.02% New type preservative N.
Purification	Affinity purification

Immunogen

Gene Name	ARHGEF19
Alternative Names	ARHGEF19; Rho guanine nucleotide exchange factor 19; Ephexin-2
Gene ID	128272.0
SwissProt ID	Q81W93.The antiserum was produced against synthesized peptide derived from human ARHGEF19. AA range:251-300

Application

Dilution Ratio	WB 1:500 - 1:2000. IHC 1:100 - 1:300. ELISA: 1:20000..
Molecular Weight	90kD

Background

Product Name: ARHGEF19 Rabbit Polyclonal Antibody
Catalog #: APRab07129

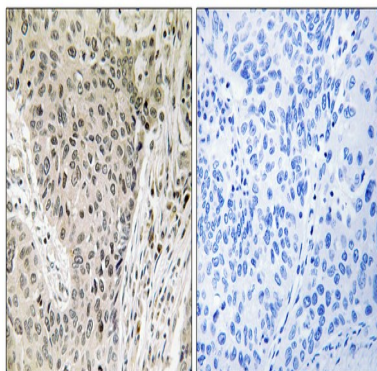


Guanine nucleotide exchange factors (GEFs) such as ARHGEF19 accelerate the GTPase activity of Rho GTPases (see RHOA, MIM 165390).[supplied by OMIM, Dec 2008],function:Acts as guanine nucleotide exchange factor (GEF) for RhoA GTPase.,similarity:Contains 1 DH (DBL-homology) domain.,similarity:Contains 1 PH domain.,similarity:Contains 1 SH3 domain.,

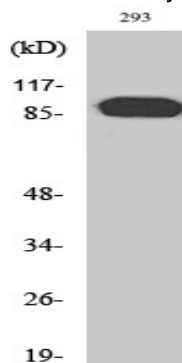
Research Area

Regulation of Actin Dynamics; AMPK

Image Data



Immunohistochemistry analysis of paraffin-embedded human lung carcinoma, using ARHGEF19 Antibody. The picture on the right is blocked with the synthesized peptide.



Western Blot analysis of various cells using ARHGEF19 Polyclonal Antibody

Note

For research use only.