
Summary

Production Name	ARHGEF10 Rabbit Polyclonal Antibody
Description	Rabbit Polyclonal Antibody
Host	Rabbit
Application	IHC,WB,ELISA
Reactivity	Human,Monkey

Performance

Conjugation	Unconjugated
Modification	Unmodified
Isotype	IgG
Clonality	Polyclonal
Form	Liquid
Storage	Store at 4°C short term. Aliquot and store at -20°C long term. Avoid freeze/thaw cycles.
Buffer	Liquid in PBS containing 50% glycerol, 0.5% BSA and 0.02% New type preservative N.
Purification	Affinity purification

Immunogen

Gene Name	ARHGEF10
Alternative Names	ARHGEF10; KIAA0294; Rho guanine nucleotide exchange factor 10
Gene ID	9639.0
SwissProt ID	O15013.The antiserum was produced against synthesized peptide derived from human ARHGEF10. AA range:339-388

Application

Dilution Ratio	WB 1:500 - 1:2000. IHC 1:100 - 1:300. ELISA: 1:20000..
Molecular Weight	152kD

Background

Product Name: ARHGEF10 Rabbit Polyclonal Antibody
Catalog #: APRab07127

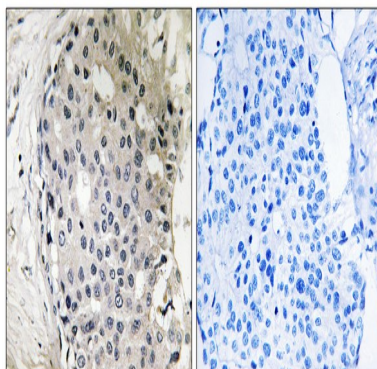


This gene encodes a Rho guanine nucleotide exchange factor (GEF). Rho GEFs regulate the activity of small Rho GTPases by stimulating the exchange of guanine diphosphate (GDP) for guanine triphosphate (GTP) and may play a role in neural morphogenesis. Mutations in this gene are associated with slowed nerve conduction velocity (SNCV). Alternative splicing results in multiple transcript variants. [provided by RefSeq, Apr 2015],disease:Defects in ARHGEF10 are the cause of slowed nerve conduction velocity (SNCV) [MIM:608236]. Affected individuals present a reduction in nerve conduction velocities without any clinical signs of peripheral or central nervous system dysfunction. SNCV inheritance is autosomal dominant.,function:May play a role in developmental myelination of peripheral nerves.,sequence caution:Cloning artifact.,sequence caution:Translated as Lys.,similarity:Contains 1 DH (DBL-homology) domain.,

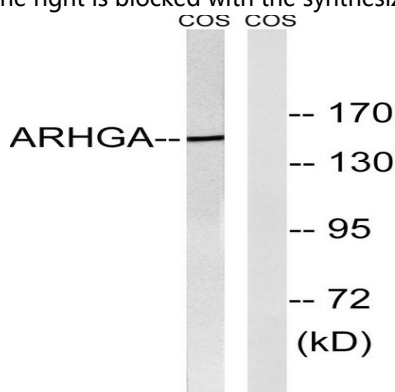
Research Area

Regulation of Actin Dynamics; AMPK

Image Data

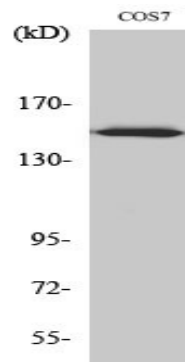


Immunohistochemistry analysis of paraffin-embedded human breast carcinoma tissue, using ARHGEF10 Antibody. The picture on the right is blocked with the synthesized peptide.



Western blot analysis of lysates from COS7 cells, using ARHGEF10 Antibody. The lane on the right is blocked with the synthesized peptide.

Product Name: ARHGEF10 Rabbit Polyclonal Antibody
Catalog #: APRab07127



Western Blot analysis of various cells using ARHGEF10 Polyclonal Antibody

Note

For research use only.