

## Summary

<b>Production Name</b>	ARHG4 Rabbit Polyclonal Antibody
<b>Description</b>	Rabbit Polyclonal Antibody
<b>Host</b>	Rabbit
<b>Application</b>	WB
<b>Reactivity</b>	Human,Mouse

## Performance

<b>Conjugation</b>	Unconjugated
<b>Modification</b>	Unmodified
<b>Isotype</b>	IgG
<b>Clonality</b>	Polyclonal
<b>Form</b>	Liquid
<b>Storage</b>	Store at 4°C short term. Aliquot and store at -20°C long term. Avoid freeze/thaw cycles.
<b>Buffer</b>	Liquid in PBS containing 50% glycerol, and 0.02% New type preservative N.
<b>Purification</b>	Affinity purification

## Immunogen

<b>Gene Name</b>	ARHGEF4 KIAA1112
<b>Alternative Names</b>	
<b>Gene ID</b>	50649.0
<b>SwissProt ID</b>	Q9NR80.Synthesized peptide derived from human protein . at AA range: 270-350

## Application

<b>Dilution Ratio</b>	WB 1:500-2000 ELISA 1:5000-20000
<b>Molecular Weight</b>	75kD

## Background

Rho GTPases play a fundamental role in numerous cellular processes that are initiated by extracellular stimuli that work through G protein coupled receptors. The protein encoded by this gene may form complex with G proteins and stimulate

**Product Name: ARHG4 Rabbit Polyclonal Antibody**  
**Catalog #: APRab07116**

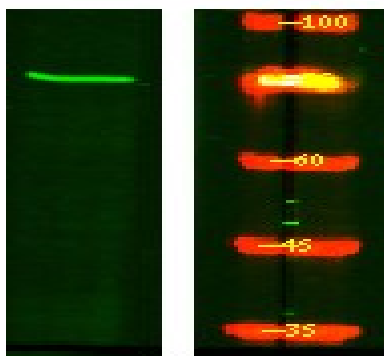


Rho-dependent signals. Multiple alternatively spliced transcript variants encoding different isoforms have been found, but the full-length nature of some variants has not been determined. [provided by RefSeq, Jun 2013],function:Acts as guanine nucleotide exchange factor (GEF) for RhoA and RAC1 GTPases. Binding of APC may activate RAC1 GEF activity. The APC-ARHGEF4 complex seems to be involved in cell migration as well as in E-cadherin-mediated cell-cell adhesion.,sequence caution:Translation N-terminally extended.,similarity:Contains 1 DH (DBL-homology) domain.,similarity:Contains 1 PH domain.,similarity:Contains 1 SH3 domain.,subcellular location:Associated with membrane ruffles.,subunit:Isoform 3 interacts with RHOA and RAC1, and through its N-terminus with APC. Found in a complex consisting of ARHGEF4, APC and CTNNB1.,tissue specificity:Expressed at low levels in brain, kidney, lung and muscle.,

## Research Area

Regulates Actin and Cytoskeleton;

## Image Data



Western Blot analysis of HEK293 lysis, using primary antibody at 1:1000 dilution. Secondary antibody was diluted at 1:10000

## Note

For research use only.