
Summary

Production Name	Arfaptin 1 Rabbit Polyclonal Antibody
Description	Rabbit Polyclonal Antibody
Host	Rabbit
Application	IF, WB, IHC, ELISA
Reactivity	Human, Mouse, Rat

Performance

Conjugation	Unconjugated
Modification	Unmodified
Isotype	IgG
Clonality	Polyclonal
Form	Liquid
Storage	Store at 4°C short term. Aliquot and store at -20°C long term. Avoid freeze/thaw cycles.
Buffer	Liquid in PBS containing 50% glycerol, 0.5% BSA and 0.02% New type preservative N.
Purification	Affinity purification

Immunogen

Gene Name	ARFIP1
Alternative Names	ARFIP1; Arfaptin-1; ADP-ribosylation factor-interacting protein 1
Gene ID	27236.0
SwissProt ID	P53367. The antiserum was produced against synthesized peptide derived from human ARFIP1. AA range: 271-320

Application

Dilution Ratio	WB 1:500 - 1:2000. IHC 1:100 - 1:300. IF 1:200 - 1:1000. ELISA: 1:40000. Not yet tested in other applications.
Molecular Weight	40kD

Product Name: Arfaptin 1 Rabbit Polyclonal Antibody
Catalog #: APRab07104

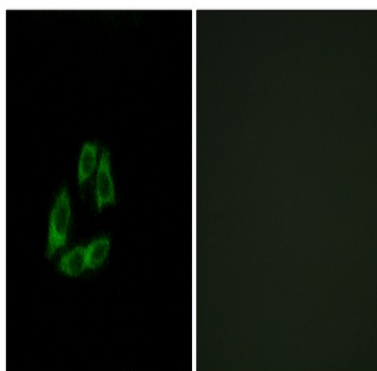


Background

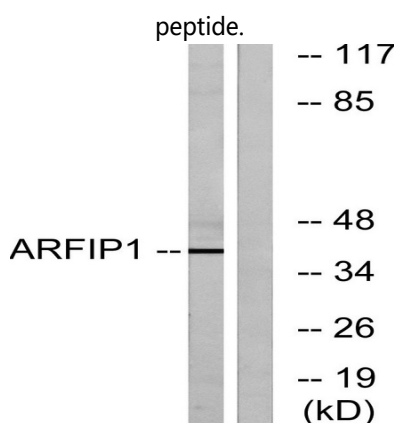
function:Putative target protein of ADP-ribosylation factor.,similarity:Contains 1 AH domain.,subunit:Interacts with non-myristoylated GTP-bound ARF3, but not to GDP-bound ARF3, and also to ARF1. Binds with lower affinity to ARF5 and with very little affinity to ARF6.,tissue specificity:Ubiquitously expressed. Higher levels in liver, pancreas, placenta, skeletal muscle and heart.,function:Putative target protein of ADP-ribosylation factor.,similarity:Contains 1 AH domain.,subunit:Interacts with non-myristoylated GTP-bound ARF3, but not to GDP-bound ARF3, and also to ARF1. Binds with lower affinity to ARF5 and with very little affinity to ARF6.,tissue specificity:Ubiquitously expressed. Higher levels in liver, pancreas, placenta, skeletal muscle and heart.,

Research Area

Image Data

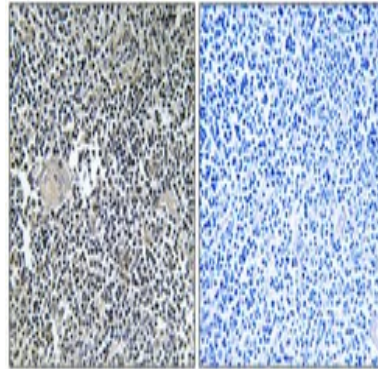


Immunofluorescence analysis of A549 cells, using ARFIP1 Antibody. The picture on the right is blocked with the synthesized peptide.



Western blot analysis of lysates from Jurkat cells, using ARFIP1 Antibody. The lane on the right is blocked with the synthesized peptide.

Product Name: Arfaptin 1 Rabbit Polyclonal Antibody
Catalog #: APRab07104



Immunohistochemical analysis of paraffin-embedded Human thymus gland. Antibody was diluted at 1:100 (4°,overnight) . High-pressure and temperature Tris-EDTA,pH8.0 was used for antigen retrieval. Negative contrl (right) obtaned from antibody was pre-absorbed by immunogen peptide.

Note

For research use only.