

Product Name: A-Raf Rabbit Polyclonal Antibody
Catalog #: APRab07090



Summary

Production Name	A-Raf Rabbit Polyclonal Antibody
Description	Rabbit Polyclonal Antibody
Host	Rabbit
Application	IHC,WB,ELISA
Reactivity	Human,Mouse,Rat

Performance

Conjugation	Unconjugated
Modification	Unmodified
Isotype	IgG
Clonality	Polyclonal
Form	Liquid
Storage	Store at 4°C short term. Aliquot and store at -20°C long term. Avoid freeze/thaw cycles.
Buffer	Liquid in PBS containing 50% glycerol, 0.5% BSA and 0.02% New type preservative N.
Purification	Affinity purification

Immunogen

Gene Name	ARAF
Alternative Names	ARAF; ARAF1; PKS; PKS2; Serine/threonine-protein kinase A-Raf; Proto-oncogene A-Raf; Proto-oncogene A-Raf-1; Proto-oncogene Pks
Gene ID	369.0
SwissProt ID	P10398.The antiserum was produced against synthesized peptide derived from human A-RAF. AA range:276-325

Application

Dilution Ratio	WB 1:500 - 1:2000. IHC 1:100 - 1:300. ELISA: 1:20000..
Molecular Weight	68kD

Product Name: A-Raf Rabbit Polyclonal Antibody
Catalog #: APRab07090



Background

This proto-oncogene belongs to the RAF subfamily of the Ser/Thr protein kinase family, and maybe involved in cell growth and development. Alternatively spliced transcript variants encoding different isoforms have been found for this gene.

[provided by RefSeq, Jan 2012],catalytic activity:ATP + a protein = ADP + a phosphoprotein.,cofactor:Binds 2 zinc ions per subunit.,function:Involved in the transduction of mitogenic signals from the cell membrane to the

nucleus.,similarity:Belongs to the protein kinase superfamily.,similarity:Belongs to the protein kinase superfamily. TKL

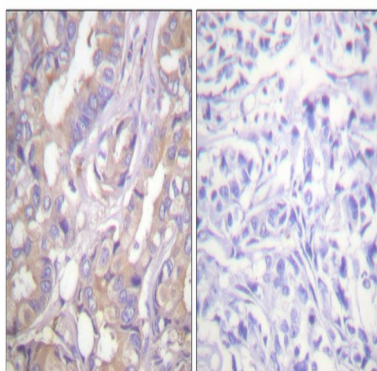
Ser/Thr protein kinase family. RAF subfamily.,similarity:Contains 1 phorbol-ester/DAG-type zinc finger.,similarity:Contains 1 protein kinase domain.,similarity:Contains 1 RBD (Ras-binding) domain.,subunit:Interacts with TH1L/NELFD.,tissue

specificity:Predominantly in urogenital tissues.,

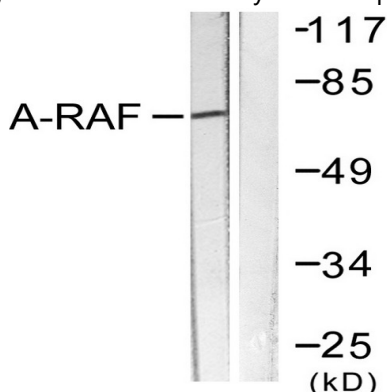
Research Area

Regulation of Actin Dynamics; ErbB/HER; Cell Growth

Image Data



Immunohistochemistry analysis of paraffin-embedded human breast carcinoma tissue, using A-RAF Antibody. The picture on the right is blocked with the synthesized peptide.



Western blot analysis of lysates from HeLa cells, treated with PMA 125ng/ml 30', using A-RAF Antibody. The lane on the right is blocked with the synthesized peptide.

Product Name: A-Raf Rabbit Polyclonal Antibody
Catalog #: APRab07090



Western Blot analysis of various cells using A-Raf Polyclonal Antibody

Note

For research use only.