
Summary

Production Name	ApoL4 Rabbit Polyclonal Antibody
Description	Rabbit Polyclonal Antibody
Host	Rabbit
Application	IF,IHC,WB,ELISA
Reactivity	Human,Rat,Mouse

Performance

Conjugation	Unconjugated
Modification	Unmodified
Isotype	IgG
Clonality	Polyclonal
Form	Liquid
Storage	Store at 4°C short term. Aliquot and store at -20°C long term. Avoid freeze/thaw cycles.
Buffer	Liquid in PBS containing 50% glycerol, 0.5% BSA and 0.02% New type preservative N.
Purification	Affinity purification

Immunogen

Gene Name	APOL4
Alternative Names	APOL4; Apolipoprotein L4; Apolipoprotein L-IV; ApoL-IV
Gene ID	80832.0
SwissProt ID	Q9BPW4.The antiserum was produced against synthesized peptide derived from human APOL4. AA range:301-350

Application

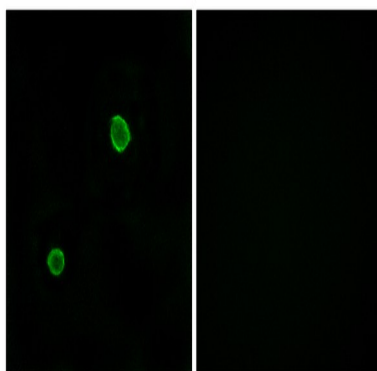
Dilution Ratio	WB 1:500 - 1:2000. IHC 1:100 - 1:300. IF 1:200 - 1:1000. ELISA: 1:20000. Not yet tested in other applications.
Molecular Weight	34kD

Background

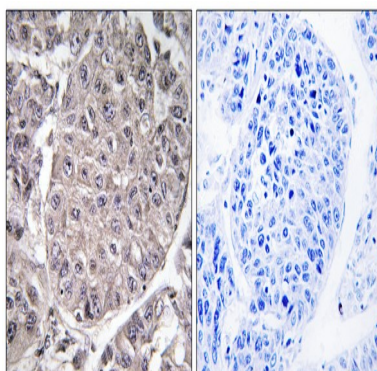
The protein encoded by this gene is a member of the apolipoprotein L family and may play a role in lipid exchange and transport throughout the body, as well as in reverse cholesterol transport from peripheral cells to the liver. Two transcript variants encoding two different isoforms have been found for this gene. Only one of the isoforms appears to be a secreted protein. [provided by RefSeq, Jul 2008],function:May play a role in lipid exchange and transport throughout the body. May participate in reverse cholesterol transport from peripheral cells to the liver.,similarity:Belongs to the apolipoprotein L family.,tissue specificity:Widely expressed; the highest levels are in spinal cord, placenta, adrenal gland; also detected in spleen, bone marrow, uterus, trachea, mammary gland and testis; levels are low in brain, heart and pancreas.,

Research Area

Image Data

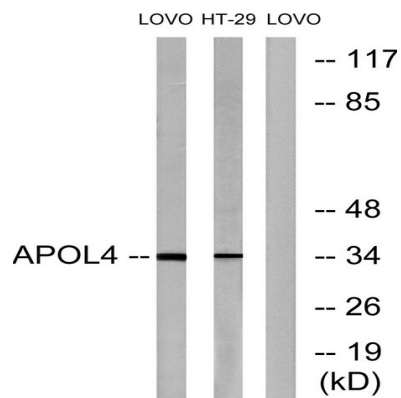


Immunofluorescence analysis of MCF7 cells, using APOL4 Antibody. The picture on the right is blocked with the synthesized peptide.



Immunohistochemistry analysis of paraffin-embedded human liver carcinoma tissue, using APOL4 Antibody. The picture on the right is blocked with the synthesized peptide.

Product Name: ApoL4 Rabbit Polyclonal Antibody
Catalog #: APRab07047



Western blot analysis of lysates from LOVO and HT-29 cells, using APOL4 Antibody. The lane on the right is blocked with the synthesized peptide.

Note

For research use only.