

Summary

Production Name	APOC2 Rabbit Polyclonal Antibody
Description	Rabbit Polyclonal Antibody
Host	Rabbit
Application	WB,ELISA
Reactivity	Human,Rat,Mouse

Performance

Conjugation	Unconjugated
Modification	Unmodified
Isotype	IgG
Clonality	Polyclonal
Form	Liquid
Storage	Store at 4°C short term. Aliquot and store at -20°C long term. Avoid freeze/thaw cycles.
Buffer	Liquid in PBS containing 50% glycerol, 0.5% BSA and 0.02% New type preservative N.
Purification	Affinity purification

Immunogen

Gene Name	APOC2 APC2
Alternative Names	Apolipoprotein C-II (Apo-CII;ApoC-II;Apolipoprotein C2)
Gene ID	344.0
SwissProt ID	P02655.Synthesized peptide derived from human APOC2 AA range: 1-50

Application

Dilution Ratio IHC: 1:100-1:300 ELISA: 1:10000

Molecular Weight

Background

This gene encodes a lipid-binding protein belonging to the apolipoprotein gene family. The protein is secreted in plasma where it is a component of very low density lipoprotein. This protein activates the enzyme lipoprotein lipase, which

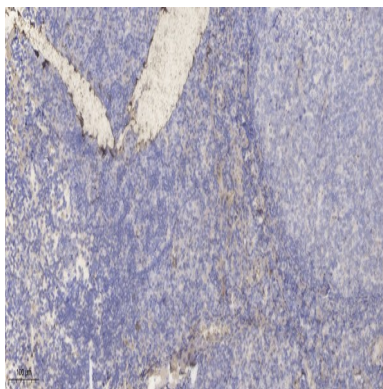
Product Name: APOC2 Rabbit Polyclonal Antibody
Catalog #: APRab07029



hydrolyzes triglycerides and thus provides free fatty acids for cells. Mutations in this gene cause hyperlipoproteinemia type IB, characterized by hypertriglyceridemia, xanthomas, and increased risk of pancreatitis and early atherosclerosis. This gene is present in a cluster with other related apolipoprotein genes on chromosome 19. Naturally occurring read-through transcription exists between this gene and the neighboring upstream apolipoprotein C-IV (APOC4) gene. [provided by RefSeq, Mar 2011],disease:Defects in APOC2 are the cause of hyperlipoproteinemia type IB [MIM:207750]. It is an autosomal recessive trait characterized by hypertriglyceridemia, xanthomas, and increased risk of pancreatitis and early atherosclerosis.,function:Component of the very low density lipoprotein (VLDL) fraction in plasma, and is an activator of several triacylglycerol lipases. The association of APOC2 with plasma chylomicrons, VLDL, and HDL is reversible, a function of the secretion and catabolism of triglyceride-rich lipoproteins, and changes rapidly.,similarity:Belongs to the apolipoprotein C2 family.,tissue specificity:Secreted in plasma.,

Research Area

Image Data



Immunohistochemical analysis of paraffin-embedded human tonsil. 1, Antibody was diluted at 1:200 (4° overnight) . 2, Tris-EDTA,pH9.0 was used for antigen retrieval. 3,Secondary antibody was diluted at 1:200 (room temperature, 30min) .

Note

For research use only.