

**Product Name: Apaf-1-ALT Rabbit Polyclonal Antibody**  
**Catalog #: APRab06989**



## Summary

<b>Production Name</b>	Apaf-1-ALT Rabbit Polyclonal Antibody
<b>Description</b>	Rabbit Polyclonal Antibody
<b>Host</b>	Rabbit
<b>Application</b>	IHC,WB,
<b>Reactivity</b>	Human,Rat,Mouse

## Performance

<b>Conjugation</b>	Unconjugated
<b>Modification</b>	Unmodified
<b>Isotype</b>	IgG
<b>Clonality</b>	Polyclonal
<b>Form</b>	Liquid
<b>Storage</b>	Store at 4°C short term. Aliquot and store at -20°C long term. Avoid freeze/thaw cycles.
<b>Buffer</b>	Liquid in PBS containing 50% glycerol, 0.5% BSA and 0.02% New type preservative N.
<b>Purification</b>	Affinity purification

## Immunogen

<b>Gene Name</b>	APAF1
<b>Alternative Names</b>	APAF1-interacting protein; APIP; APIP2; CGI-29 protein; MMRP19; dJ179L10.2; likely ortholog of mouse monocyte macrophage 19
<b>Gene ID</b>	317.0
<b>SwissProt ID</b>	O14727-6.The antiserum was produced against synthesized peptide derived from human APAF-1-ALT. AA range:289-338

## Application

<b>Dilution Ratio</b>	WB 1:500 - 1:2000. IHC 1:100 - 1:300. ELISA: 1:10000. Not yet tested in other applications.
<b>Molecular Weight</b>	27kD

**Product Name: Apaf-1-ALT Rabbit Polyclonal Antibody**  
**Catalog #: APRab06989**

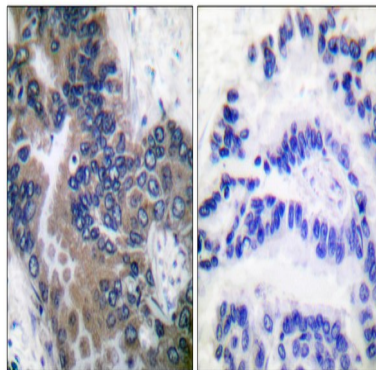


## Background

This gene encodes a cytoplasmic protein that initiates apoptosis. This protein contains several copies of the WD-40 domain, a caspase recruitment domain (CARD), and an ATPase domain (NB-ARC). Upon binding cytochrome c and dATP, this protein forms an oligomeric apoptosome. The apoptosome binds and cleaves caspase 9 preproprotein, releasing its mature, activated form. Activated caspase 9 stimulates the subsequent caspase cascade that commits the cell to apoptosis. Alternative splicing results in several transcript variants encoding different isoforms. [provided by RefSeq, Jul 2008],domain:The CARD domain mediates interaction with AIP1.,function:Oligomeric Apaf-1 mediates the cytochrome c-dependent autocatalytic activation of pro-caspase-9 (Apaf-3), leading to the activation of caspase-3 and apoptosis. This activation requires ATP. Isoform 6 is less effective in inducing apoptosis.,induction:By E2F and p53 in apoptotic neurons.,similarity:Contains 1 CARD domain.,similarity:Contains 1 NB-ARC domain.,similarity:Contains 13 WD repeats.,subunit:Monomer. Oligomerizes upon binding of cytochrome c and dATP. Oligomeric Apaf-1 and pro-caspase-9 bind to each other via their respective NH2-terminal CARD domains and consecutively mature caspase-9 is released from the complex. Pro-caspase-3 is recruited into the Apaf-1-pro-caspase-9 complex via interaction with pro-caspase-9. Interacts with AIP1.,tissue specificity:Ubiquitous. Highest levels of expression in adult spleen and peripheral blood leukocytes, and in fetal brain, kidney and lung. Isoform 1 is expressed in heart, kidney and liver.,

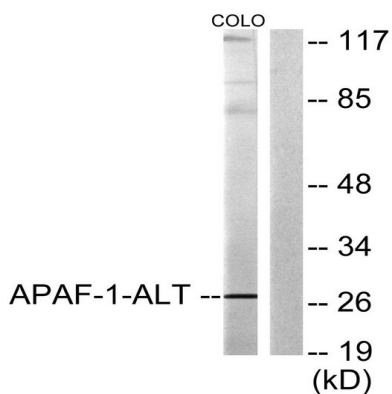
## Research Area

## Image Data

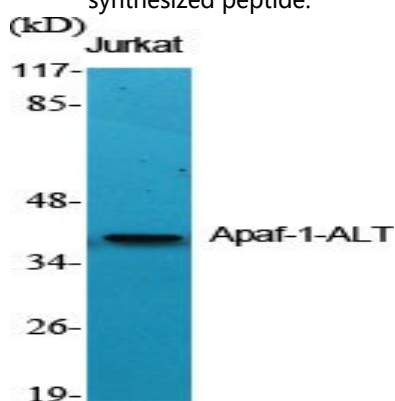


Immunohistochemistry analysis of paraffin-embedded human lung carcinoma tissue, using APAF-1-ALT Antibody. The picture on the right is blocked with the synthesized peptide.

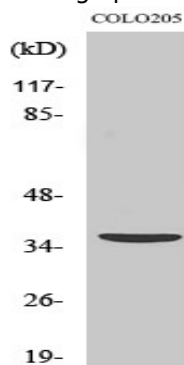
Product Name: Apaf-1-ALT Rabbit Polyclonal Antibody  
Catalog #: APRab06989



Western blot analysis of lysates from COLO205 cells, using APAF-1-ALT Antibody. The lane on the right is blocked with the synthesized peptide.



Western Blot analysis of various cells using Apaf-1-ALT Polyclonal Antibody diluted at 1: 500



Western Blot analysis of COLO205 cells using Apaf-1-ALT Polyclonal Antibody diluted at 1: 500

## Note

For research use only.