
Summary

Production Name	Apaf-1 Rabbit Polyclonal Antibody
Description	Rabbit Polyclonal Antibody
Host	Rabbit
Application	WB,IHC,
Reactivity	Human,Mouse,Rat

Performance

Conjugation	Unconjugated
Modification	Unmodified
Isotype	IgG
Clonality	Polyclonal
Form	Liquid
Storage	Store at 4°C short term. Aliquot and store at -20°C long term. Avoid freeze/thaw cycles.
Buffer	Liquid in PBS containing 50% glycerol, 0.5% BSA and 0.02% New type preservative N.
Purification	Affinity purification

Immunogen

Gene Name	APAF1
Alternative Names	APAF1; KIAA0413; Apoptotic protease-activating factor 1; APAF-1
Gene ID	317.0
SwissProt ID	O14727.The antiserum was produced against synthesized peptide derived from the Internal region of human APAF1. AA range:501-550

Application

Dilution Ratio	WB 1:500 - 1:2000 IHC 1:100 - 1:300. ELISA: 1:20000..
Molecular Weight	135kD

Background

Product Name: Apaf-1 Rabbit Polyclonal Antibody
Catalog #: APRab06988

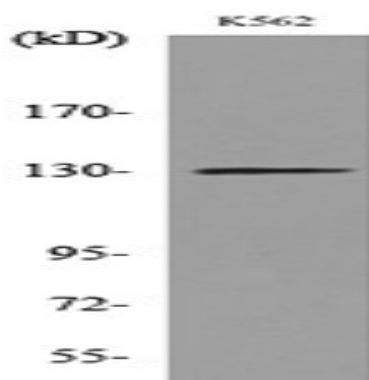


This gene encodes a cytoplasmic protein that initiates apoptosis. This protein contains several copies of the WD-40 domain, a caspase recruitment domain (CARD), and an ATPase domain (NB-ARC). Upon binding cytochrome c and dATP, this protein forms an oligomeric apoptosome. The apoptosome binds and cleaves caspase 9 preproprotein, releasing its mature, activated form. Activated caspase 9 stimulates the subsequent caspase cascade that commits the cell to apoptosis. Alternative splicing results in several transcript variants encoding different isoforms. [provided by RefSeq, Jul 2008],domain:The CARD domain mediates interaction with AIP1.,function:Oligomeric Apaf-1 mediates the cytochrome c-dependent autocatalytic activation of pro-caspase-9 (Apaf-3), leading to the activation of caspase-3 and apoptosis. This activation requires ATP. Isoform 6 is less effective in inducing apoptosis.,induction:By E2F and p53 in apoptotic neurons.,similarity:Contains 1 CARD domain.,similarity:Contains 1 NB-ARC domain.,similarity:Contains 13 WD repeats.,subunit:Monomer. Oligomerizes upon binding of cytochrome c and dATP. Oligomeric Apaf-1 and pro-caspase-9 bind to each other via their respective NH2-terminal CARD domains and consecutively mature caspase-9 is released from the complex. Pro-caspase-3 is recruited into the Apaf-1-pro-caspase-9 complex via interaction with pro-caspase-9. Interacts with AIP1.,tissue specificity:Ubiquitous. Highest levels of expression in adult spleen and peripheral blood leukocytes, and in fetal brain, kidney and lung. Isoform 1 is expressed in heart, kidney and liver.,

Research Area

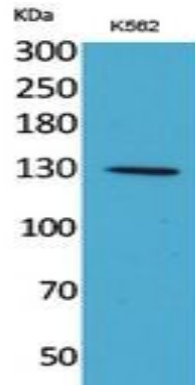
p53;Apoptosis_Inhibition;Apoptosis_Mitochondrial;Apoptosis_Overview;Alzheimer's disease;Parkinson's disease;Amyotrophic lateral sclerosis (ALS);Huntington's disease;Small cell lung cancer;

Image Data

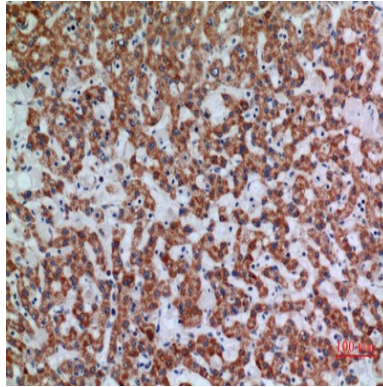


Western blot analysis of lysate from K562 cells, using APAF1 Antibody.

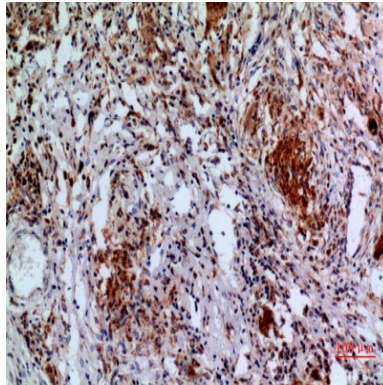
Product Name: Apaf-1 Rabbit Polyclonal Antibody
Catalog #: APRab06988



Western Blot analysis of K562 cells using Apaf-1 Polyclonal Antibody.. Secondary antibody was diluted at 1:20000



Immunohistochemical analysis of paraffin-embedded human-liver, antibody was diluted at 1:100



Immunohistochemical analysis of paraffin-embedded human-lung, antibody was diluted at 1:100

Note

For research use only.