

---

## Summary

<b>Production Name</b>	AP-2 $\gamma$ Rabbit Polyclonal Antibody
<b>Description</b>	Rabbit Polyclonal Antibody
<b>Host</b>	Rabbit
<b>Application</b>	WB,IHC,IF,ELISA
<b>Reactivity</b>	Human,Mouse,Rat

## Performance

<b>Conjugation</b>	Unconjugated
<b>Modification</b>	Unmodified
<b>Isotype</b>	IgG
<b>Clonality</b>	Polyclonal
<b>Form</b>	Liquid
<b>Storage</b>	Store at 4°C short term. Aliquot and store at -20°C long term. Avoid freeze/thaw cycles.
<b>Buffer</b>	Liquid in PBS containing 50% glycerol, 0.5% BSA and 0.02% New type preservative N.
<b>Purification</b>	Affinity purification

## Immunogen

<b>Gene Name</b>	TFAP2C
<b>Alternative Names</b>	TFAP2C; Transcription factor AP-2 gamma; AP2-gamma; Activating enhancer-binding protein 2 gamma; Transcription factor ERF-1
<b>Gene ID</b>	7022.0
<b>SwissProt ID</b>	Q92754.The antiserum was produced against synthesized peptide derived from human AP2C. AA range:401-450

## Application

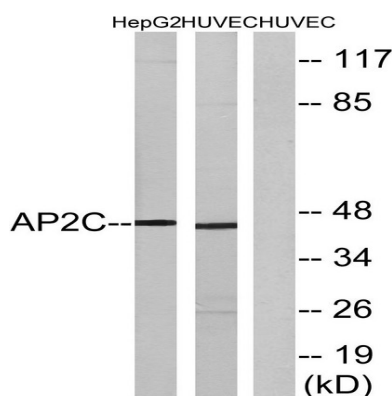
<b>Dilution Ratio</b>	WB 1:500 - 1:2000. IHC 1:100 - 1:300. ELISA: 1:40000.. IF 1:50-200
<b>Molecular Weight</b>	45kD

## Background

transcription factor AP-2 gamma(TFAP2C) Homo sapiens The protein encoded by this gene is a sequence-specific DNA-binding transcription factor involved in the activation of several developmental genes. The encoded protein can act as either a homodimer or heterodimer with other family members and is induced during retinoic acid-mediated differentiation. It plays a role in the development of the eyes, face, body wall, limbs, and neural tube. [provided by RefSeq, Jul 2008],domain:The WW-binding motif mediates interaction with WWOX.,function:Sequence-specific DNA-binding protein that interacts with inducible viral and cellular enhancer elements to regulate transcription of selected genes. AP-2 factors bind to the consensus sequence 5'-GCCNNNGGC-3' and activate genes involved in a large spectrum of important biological functions including proper eye, face, body wall, limb and neural tube development. They also suppress a number of genes including MCAM/MUC18, C/EBP alpha and MYC.,induction:During retinoic acid-mediated differentiation.,online information:Activatin protein 2 entry,PTM:Sumoylated on Lys-10; which inhibits transcriptional activity.,similarity:Belongs to the AP-2 family.,subunit:Binds DNA as a dimer. Can form homodimers or heterodimers with other AP-2 family members (By similarity). Interacts with WWOX. Interacts with CITED4. Interacts with UBE2L,

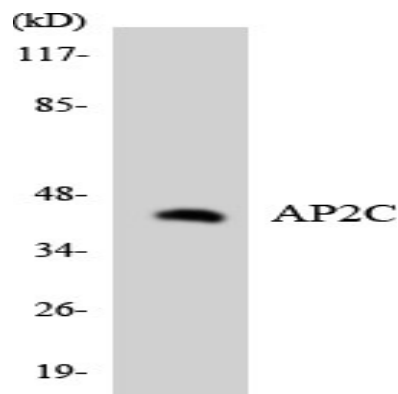
## Research Area

## Image Data

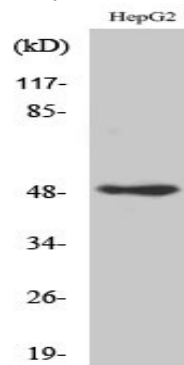


Western blot analysis of lysates from HepG2 and HUVEC cells, using AP2C Antibody. The lane on the right is blocked with the synthesized peptide.

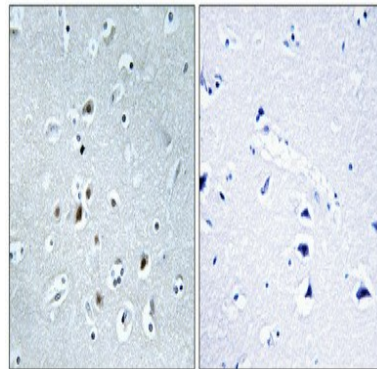
**Product Name: AP-2 $\gamma$  Rabbit Polyclonal Antibody**  
**Catalog #: APRab06980**



Western blot analysis of the lysates from K562 cells using AP2C antibody.

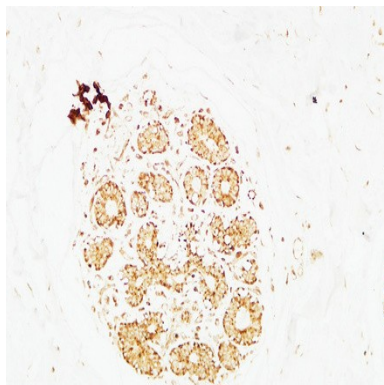


Western Blot analysis of various cells using AP-2 $\gamma$  Polyclonal Antibody cells nucleus extracted by Minute TM Cytoplasmic and Nuclear Fractionation kit (SC-003, Inventbiotech, MN, USA) .

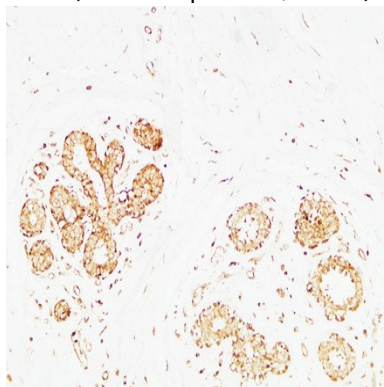


Immunohistochemical analysis of paraffin-embedded Human brain. Antibody was diluted at 1:100 (4 $^{\circ}$ , overnight) . High-pressure and temperature Tris-EDTA, pH8.0 was used for antigen retrieval. Negative contrl (right) obtained from antibody was pre-absorbed by immunogen peptide.

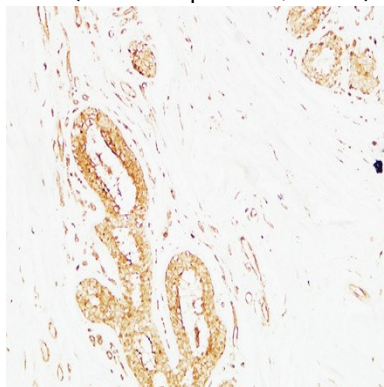
**Product Name: AP-2γ Rabbit Polyclonal Antibody**  
**Catalog #: APRab06980**



Immunohistochemical analysis of paraffin-embedded Human breast. 1, Antibody was diluted at 1:200 (4°,overnight) . 2, High-pressure and temperature EDTA, pH8.0 was used for antigen retrieval. 3,Secondary antibody was diluted at 1:200 (room temperature, 30min) .



Immunohistochemical analysis of paraffin-embedded Human breast. 1, Antibody was diluted at 1:200 (4°,overnight) . 2, High-pressure and temperature EDTA, pH8.0 was used for antigen retrieval. 3,Secondary antibody was diluted at 1:200 (room temperature, 30min) .



Immunohistochemical analysis of paraffin-embedded Human breast. 1, Antibody was diluted at 1:200 (4°,overnight) . 2, High-pressure and temperature EDTA, pH8.0 was used for antigen retrieval. 3,Secondary antibody was diluted at 1:200 (room temperature, 30min) .

**Product Name: AP-2γ Rabbit Polyclonal Antibody**  
**Catalog #: APRab06980**



---

**Note**

For research use only.