

## Summary

<b>Production Name</b>	Anoctamin-9 Rabbit Polyclonal Antibody
<b>Description</b>	Rabbit Polyclonal Antibody
<b>Host</b>	Rabbit
<b>Application</b>	IHC,IF,ELISA
<b>Reactivity</b>	Human,Rat,Mouse

## Performance

<b>Conjugation</b>	Unconjugated
<b>Modification</b>	Unmodified
<b>Isotype</b>	IgG
<b>Clonality</b>	Polyclonal
<b>Form</b>	Liquid
<b>Storage</b>	Store at 4°C short term. Aliquot and store at -20°C long term. Avoid freeze/thaw cycles.
<b>Buffer</b>	Liquid in PBS containing 50% glycerol, 0.5% BSA and 0.02% New type preservative N.
<b>Purification</b>	Affinity purification

## Immunogen

<b>Gene Name</b>	ANO9
<b>Alternative Names</b>	ANO9; PIG5; TMEM16J; TP53I5; Anoctamin-9; Transmembrane protein 16J; Tumor protein p53-inducible protein 5; p53-induced gene 5 protein
<b>Gene ID</b>	338440.0
<b>SwissProt ID</b>	A1A5B4.The antiserum was produced against synthesized peptide derived from human TM16J. AA range:481-530

## Application

<b>Dilution Ratio</b>	IHC 1:100 - 1:300. IF 1:200 - 1:1000. ELISA: 1:5000. Not yet tested in other applications.
<b>Molecular Weight</b>	

**Product Name: Anoctamin-9 Rabbit Polyclonal Antibody**  
**Catalog #: APRab06935**

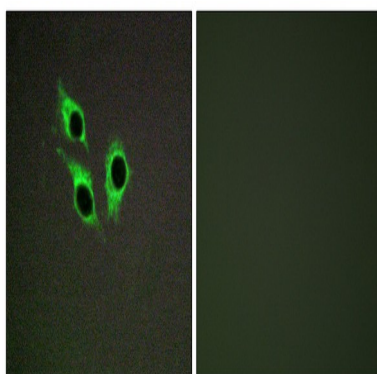


## Background

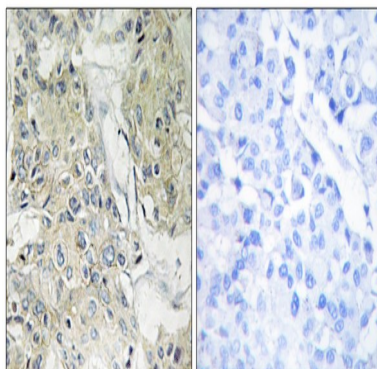
function:May act as a calcium-activated chloride channel.,sequence caution:Intron retention.,similarity:Belongs to the anoctamin family.,function:May act as a calcium-activated chloride channel.,sequence caution:Intron retention.,similarity:Belongs to the anoctamin family.,

## Research Area

## Image Data



Immunofluorescence analysis of HepG2 cells, using TM16J Antibody. The picture on the right is blocked with the synthesized peptide.



Immunohistochemistry analysis of paraffin-embedded human breast carcinoma tissue, using TM16J Antibody. The picture on the right is blocked with the synthesized peptide.

## Note

For research use only.