

Summary

Production Name	Angptl7 Rabbit Polyclonal Antibody
Description	Rabbit Polyclonal Antibody
Host	Rabbit
Application	WB
Reactivity	Human,Mouse

Performance

Conjugation	Unconjugated
Modification	Unmodified
Isotype	IgG
Clonality	Polyclonal
Form	Liquid
Storage	Store at 4°C short term. Aliquot and store at -20°C long term. Avoid freeze/thaw cycles.
Buffer	Liquid in PBS containing 50% glycerol, 0.5% BSA and 0.02% New type preservative N.
Purification	Affinity purification

Immunogen

Gene Name	ANGPTL7
Alternative Names	ANGPTL7; CDT6; Angiopoietin-related protein 7; Angiopoietin-like factor; Angiopoietin-like protein 7; Cornea-derived transcript 6 protein
Gene ID	10218.0
SwissProt ID	O43827.The antiserum was produced against synthesized peptide derived from human ANGPTL7. AA range:297-346

Application

Dilution Ratio	WB 1:500-1:2000. ELISA: 1:10000.
Molecular Weight	50kD

Background

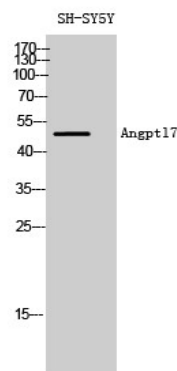
Product Name: Angptl7 Rabbit Polyclonal Antibody
Catalog #: APRab06901



similarity:Contains 1 fibrinogen C-terminal domain.,tissue specificity:Highly and specifically expressed in the cornea where is confined to the stromal layer.,similarity:Contains 1 fibrinogen C-terminal domain.,tissue specificity:Highly and specifically expressed in the cornea where is confined to the stromal layer.,

Research Area

Image Data



Western Blot analysis of SH-SY5Y cells using Angptl7 Polyclonal Antibody diluted at 1 : 2000

Note

For research use only.