

Product Name: Ameloblastin Rabbit Polyclonal Antibody
Catalog #: APRab06823

Summary

| | |
|------------------------|---|
| Production Name | Ameloblastin Rabbit Polyclonal Antibody |
| Description | Rabbit Polyclonal Antibody |
| Host | Rabbit |
| Application | WB |
| Reactivity | Human,Rat,Mouse |

Performance

| | |
|---------------------|--|
| Conjugation | Unconjugated |
| Modification | Unmodified |
| Isotype | IgG |
| Clonality | Polyclonal |
| Form | Liquid |
| Storage | Store at 4°C short term. Aliquot and store at -20°C long term. Avoid freeze/thaw cycles. |
| Buffer | Liquid in PBS containing 50% glycerol, 0.5% BSA and 0.02% New type preservative N. |
| Purification | Affinity purification |

Immunogen

| | |
|--------------------------|---|
| Gene Name | AMBN |
| Alternative Names | AMBN; Ameloblastin |
| Gene ID | 258.0 |
| SwissProt ID | Q9NP70.The antiserum was produced against synthesized peptide derived from human Ameloblastin. AA range:275-324 |

Application

| | |
|-------------------------|----------------------------------|
| Dilution Ratio | WB 1:500-1:2000. ELISA: 1:10000. |
| Molecular Weight | 48kD |

Background

This gene encodes the nonamelogenin enamel matrix protein ameloblastin. The encoded protein may be important in

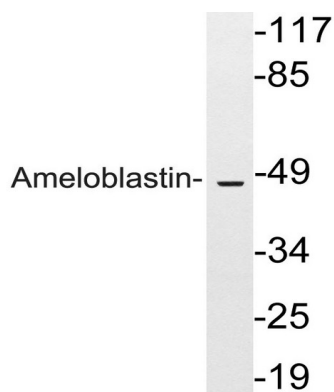
Product Name: Ameloblastin Rabbit Polyclonal Antibody
Catalog #: APRab06823



enamel matrix formation and mineralization. This gene is located in the calcium-binding phosphoprotein gene cluster on chromosome 4. Mutations in this gene may be associated with dentinogenesis imperfect and autosomal dominant amylogenesis imperfect. [provided by RefSeq, Aug 2011],disease:Defects in AMBN are found in patients with ameloblastomas.,function:Involved in the mineralization and structural organization of enamel.,similarity:Belongs to the ameloblastin family.,tissue specificity:Ameloblast-specific. Located at the Tomes processes of secretory ameloblasts and in the sheath space between rod-interrod enamel,

Research Area

Image Data



Western blot analysis of lysates from HeLa cells, using Ameloblastin antibody.

Note

For research use only.