

Product Name: ALS2CR4 Rabbit Polyclonal Antibody
Catalog #: APRab06813



Summary

Production Name	ALS2CR4 Rabbit Polyclonal Antibody
Description	Rabbit Polyclonal Antibody
Host	Rabbit
Application	WB
Reactivity	Human,Mouse

Performance

Conjugation	Unconjugated
Modification	Unmodified
Isotype	IgG
Clonality	Polyclonal
Form	Liquid
Storage	Store at 4°C short term. Aliquot and store at -20°C long term. Avoid freeze/thaw cycles.
Buffer	Liquid in PBS containing 50% glycerol, 0.5% BSA and 0.02% New type preservative N.
Purification	Affinity purification

Immunogen

Gene Name	TMEM237
Alternative Names	TMEM237; ALS2CR4; Transmembrane protein 237; Amyotrophic lateral sclerosis 2 chromosomal region candidate gene 4 protein
Gene ID	65062.0
SwissProt ID	Q96Q45.The antiserum was produced against synthesized peptide derived from human ALS2CR4. AA range:181-230

Application

Dilution Ratio	WB 1:500-1:2000. ELISA: 1:20000.
Molecular Weight	48kD

Background

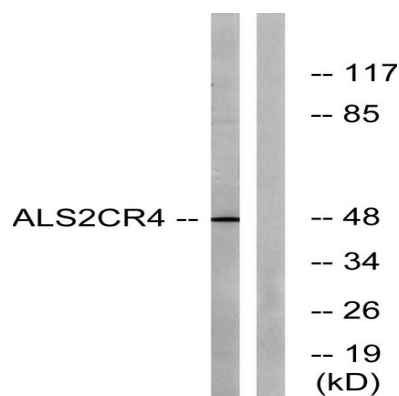
Product Name: ALS2CR4 Rabbit Polyclonal Antibody
Catalog #: APRab06813



The protein encoded by this gene is a tetraspanin protein that is thought to be involved in WNT signaling. Defects in this gene are a cause of Joubert syndrome-14. Two transcript variants encoding different isoforms have been found for this gene. [provided by RefSeq, Jan 2012],

Research Area

Image Data



Western blot analysis of lysates from Jurkat cells, using ALS2CR4 Antibody. The lane on the right is blocked with the synthesized peptide.

Note

For research use only.