

Product Name: ALS Rabbit Polyclonal Antibody
Catalog #: APRab06809



Summary

Production Name	ALS Rabbit Polyclonal Antibody
Description	Rabbit Polyclonal Antibody
Host	Rabbit
Application	WB,ELISA
Reactivity	Human,Rat,Mouse

Performance

Conjugation	Unconjugated
Modification	Unmodified
Isotype	IgG
Clonality	Polyclonal
Form	Liquid
Storage	Store at 4°C short term. Aliquot and store at -20°C long term. Avoid freeze/thaw cycles.
Buffer	Liquid in PBS containing 50% glycerol, 0.5% BSA and 0.02% New type preservative N.
Purification	Affinity purification

Immunogen

Gene Name	IGFALS
Alternative Names	IGFALS; ALS; Insulin-like growth factor-binding protein complex acid labile subunit; ALS
Gene ID	3483.0
SwissProt ID	P35858.The antiserum was produced against synthesized peptide derived from human IGFALS. AA range:303-352

Application

Dilution Ratio	WB 1:500 - 1:2000. ELISA: 1:10000. Not yet tested in other applications.
Molecular Weight	66kD

Background

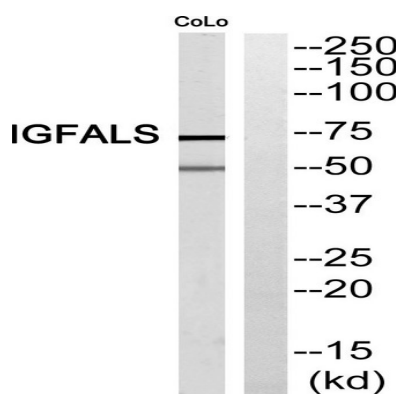
Product Name: ALS Rabbit Polyclonal Antibody
Catalog #: APRab06809



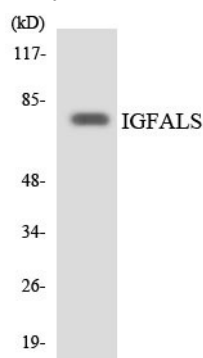
The protein encoded by this gene is a serum protein that binds insulin-like growth factors, increasing their half-life and their vascular localization. Production of the encoded protein, which contains twenty leucine-rich repeats, is stimulated by growth hormone. Defects in this gene are a cause of acid-labile subunit deficiency, which manifests itself in a delayed and slow puberty. Three transcript variants encoding two different isoforms have been found for this gene. [provided by RefSeq, Mar 2009],function:Involved in protein-protein interactions that result in protein complexes, receptor-ligand binding or cell adhesion.,similarity:Contains 20 LRR (leucine-rich) repeats.,subunit:Forms a ternary complex of about 140 to 150 kDa with IGF-I or IGF-II and IGFBP-3.,tissue specificity:Plasma.,

Research Area

Image Data

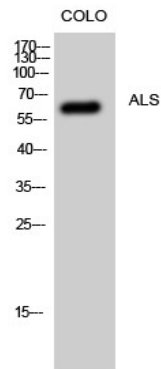


Western blot analysis of IGFALS Antibody. The lane on the right is blocked with the IGFALS peptide.



Western blot analysis of the lysates from RAW264.7 cells using IGFALS antibody.

Product Name: ALS Rabbit Polyclonal Antibody
Catalog #: APRab06809



Western Blot analysis of CoLo cells using ALS Polyclonal Antibody

Note

For research use only.