

Product Name: Alpha-protein Kinase 2 Rabbit Polyclonal Antibody
Catalog #: APRab06805

Summary

Production Name	Alpha-protein Kinase 2 Rabbit Polyclonal Antibody
Description	Rabbit Polyclonal Antibody
Host	Rabbit
Application	IHC,ELISA
Reactivity	Human,Rat,Mouse

Performance

Conjugation	Unconjugated
Modification	Unmodified
Isotype	IgG
Clonality	Polyclonal
Form	Liquid
Storage	Store at 4°C short term. Aliquot and store at -20°C long term. Avoid freeze/thaw cycles.
Buffer	Liquid in PBS containing 50% glycerol, 0.5% BSA and 0.02% New type preservative N.
Purification	Affinity purification

Immunogen

Gene Name	ALPK2
Alternative Names	ALPK2; HAK; Alpha-protein kinase 2; Heart alpha-protein kinase
Gene ID	115701.0
SwissProt ID	Q86TB3.The antiserum was produced against synthesized peptide derived from human ALPK2. AA range:1741-1790

Application

Dilution Ratio	IHC 1:100-1:300 ELISA: 1:40000
Molecular Weight	

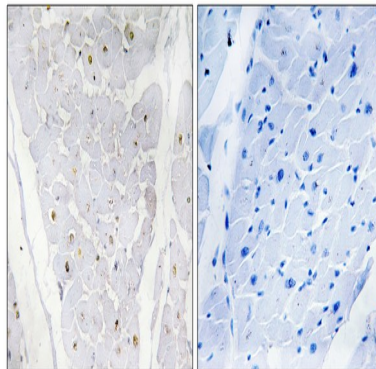
Background

Product Name: Alpha-protein Kinase 2 Rabbit Polyclonal Antibody
Catalog #: APRab06805

function:Kinases that recognize phosphorylation sites in which the surrounding peptides have an alpha-helical conformation.,similarity:Belongs to the protein kinase superfamily. Alpha-type protein kinase family. ALPK subfamily.,similarity:Contains 1 alpha-type protein kinase domain.,similarity:Contains 1 Ig-like (immunoglobulin-like) domain.,function:Kinases that recognize phosphorylation sites in which the surrounding peptides have an alpha-helical conformation.,similarity:Belongs to the protein kinase superfamily. Alpha-type protein kinase family. ALPK subfamily.,similarity:Contains 1 alpha-type protein kinase domain.,similarity:Contains 1 Ig-like (immunoglobulin-like) domain.,

Research Area

Image Data



Immunohistochemistry analysis of paraffin-embedded human heart , using ALPK2 Antibody. The picture on the right is blocked with the synthesized peptide.

Note

For research use only.