

Product Name: AKAP 2 Rabbit Polyclonal Antibody
Catalog #: APRab06722



Summary

Production Name	AKAP 2 Rabbit Polyclonal Antibody
Description	Rabbit Polyclonal Antibody
Host	Rabbit
Application	WB
Reactivity	Human,Rat,Mouse

Performance

Conjugation	Unconjugated
Modification	Unmodified
Isotype	IgG
Clonality	Polyclonal
Form	Liquid
Storage	Store at 4°C short term. Aliquot and store at -20°C long term. Avoid freeze/thaw cycles.
Buffer	Liquid in PBS containing 50% glycerol, 0.5% BSA and 0.02% New type preservative N.
Purification	Affinity purification

Immunogen

Gene Name	AKAP2
Alternative Names	AKAP2; KIAA0920; PRKA2; A-kinase anchor protein 2; AKAP-2; AKAP-KL; Protein kinase A-anchoring protein 2; PRKA2
Gene ID	445815/11217
SwissProt ID	Q9Y2D5.The antiserum was produced against synthesized peptide derived from human AKAP2. AA range:71-120

Application

Dilution Ratio	WB 1:500-1:2000. ELISA: 1:20000.
Molecular Weight	96kD

Background

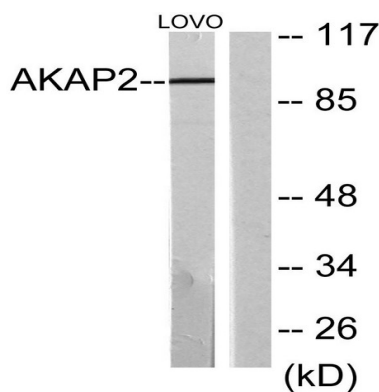
Product Name: AKAP 2 Rabbit Polyclonal Antibody
Catalog #: APRab06722



The protein encoded by this gene binds to the regulatory subunit of protein kinase A and is found associated with the actin cytoskeleton. The encoded protein mediates signals carried by cAMP and may be involved in creating polarity in certain signaling processes. Three transcript variants encoding different isoforms have been found for this gene. [provided by RefSeq, Mar 2011],caution:It is uncertain whether Met-1 or Met-3 is the initiator.,function:Binds to regulatory subunit (RII) of protein kinase A. May be involved in establishing polarity in signaling systems or in integrating PKA-RII isoforms with downstream effectors to capture, amplify and focus diffuse, trans-cellular signals carried by cAMP.,miscellaneous:Can be differentially expressed as a natural AKAP2-PALM2 chimeric protein.,similarity:Belongs to the paralemmin family.,tissue specificity:Expressed in infantile heart and muscle, and fibroblasts.,

Research Area

Image Data



Western blot analysis of lysates from LOVO cells, using AKAP2 Antibody. The lane on the right is blocked with the synthesized peptide.

Note

For research use only.