

## Summary

<b>Production Name</b>	AKAP 110 Rabbit Polyclonal Antibody
<b>Description</b>	Rabbit Polyclonal Antibody
<b>Host</b>	Rabbit
<b>Application</b>	IF,ELISA
<b>Reactivity</b>	Human,Mouse

## Performance

<b>Conjugation</b>	Unconjugated
<b>Modification</b>	Unmodified
<b>Isotype</b>	IgG
<b>Clonality</b>	Polyclonal
<b>Form</b>	Liquid
<b>Storage</b>	Store at 4°C short term. Aliquot and store at -20°C long term. Avoid freeze/thaw cycles.
<b>Buffer</b>	Liquid in PBS containing 50% glycerol, 0.5% BSA and 0.02% New type preservative N.
<b>Purification</b>	Affinity purification

## Immunogen

<b>Gene Name</b>	AKAP3 AKAP3; AKAP110; SOB1; A-kinase anchor protein 3; AKAP-3; A-kinase anchor protein
<b>Alternative Names</b>	110 kDa; AKAP 110; Cancer/testis antigen 82; CT82; Fibrous sheath protein of 95 kDa; FSP95; Fibrousheathin I; Fibrousheathin-1; Protein kinase A-anchoring prot
<b>Gene ID</b>	10566.0
<b>SwissProt ID</b>	O75969.The antiserum was produced against synthesized peptide derived from human AKAP3. AA range:191-240

## Application

<b>Dilution Ratio</b>	IF 1:200-1:1000. ELISA: 1:10000.
<b>Molecular Weight</b>	

**Product Name: AKAP 110 Rabbit Polyclonal Antibody**  
**Catalog #: APRab06718**

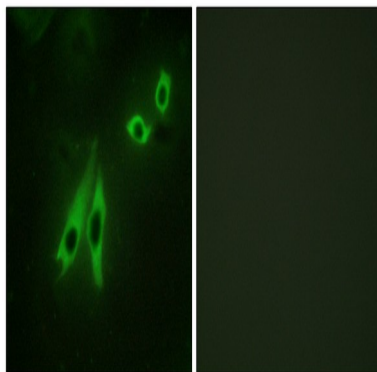


## Background

This gene encodes a member of A-kinase anchoring proteins (AKAPs), a family of functionally related proteins that target protein kinase A to discrete locations within the cell. The encoded protein is reported to participate in protein-protein interactions with the R-subunit of the protein kinase A as well as sperm-associated proteins. This protein is expressed in spermatozoa and localized to the acrosomal region of the sperm head as well as the length of the principal piece. It may function as a regulator of motility, capacitation, and the acrosome reaction. [provided by RefSeq, May 2013],domain:RII-binding site, predicted to form an amphipathic helix, could participate in protein-protein interactions with a complementary surface on the R-subunit dimer.,function:May function as a regulator of both motility- and head-associated functions such as capacitation and the acrosome reaction.,PTM:Phosphorylated on tyrosine residues.,similarity:Belongs to the AKAP110 family.,subcellular location:Ribs of the fibrous sheath in the principal piece of the sperm tail. Dorsal margin of the acrosomal segment.,subunit:Interacts with ROPN1 AND ROPN1L.,tissue specificity:Testis specific; only expressed in spermatids.,

## Research Area

## Image Data



Immunofluorescence analysis of NIH/3T3 cells, using AKAP3 Antibody. The picture on the right is blocked with the synthesized peptide.

## Note

For research use only.