

---

## Summary

<b>Production Name</b>	AIM2 Rabbit Polyclonal Antibody
<b>Description</b>	Rabbit Polyclonal Antibody
<b>Host</b>	Rabbit
<b>Application</b>	WB,ELISA
<b>Reactivity</b>	Human,Mouse,Rat

## Performance

<b>Conjugation</b>	Unconjugated
<b>Modification</b>	Unmodified
<b>Isotype</b>	IgG
<b>Clonality</b>	Polyclonal
<b>Form</b>	Liquid
<b>Storage</b>	Store at 4°C short term. Aliquot and store at -20°C long term. Avoid freeze/thaw cycles.
<b>Buffer</b>	Liquid in PBS containing 50% glycerol, 0.5% BSA and 0.02% New type preservative N.
<b>Purification</b>	Affinity purification

## Immunogen

<b>Gene Name</b>	AIM2
<b>Alternative Names</b>	AIM2; Interferon-inducible protein AIM2; Absent in melanoma 2
<b>Gene ID</b>	9447.0
<b>SwissProt ID</b>	O14862.The antiserum was produced against synthesized peptide derived from human AIM2. AA range:51-100

## Application

<b>Dilution Ratio</b>	WB 1:500 - 1:2000. ELISA: 1:40000. Not yet tested in other applications.
<b>Molecular Weight</b>	39kD

## Background

---

**Product Name: AIM2 Rabbit Polyclonal Antibody**  
**Catalog #: APRab06704**

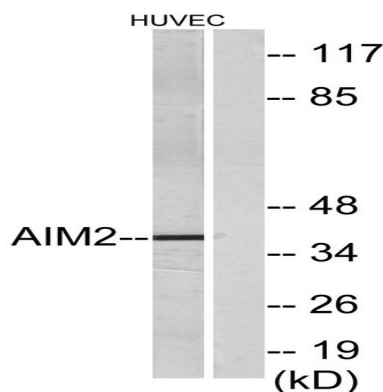


AIM2 is a member of the IFI20X /IFI16 family. It plays a putative role in tumorigenic reversion and may control cell proliferation. Interferon-gamma induces expression of AIM2. [provided by RefSeq, Jul 2008],disease:Defects in AIM2 may be a cause of microsatellite unstable colon cancers.,function:Tumor suppressor which may act by repressing NF-kappa-B transcriptional activity.,induction:By interferon gamma.,similarity:Belongs to the HIN-200 family.,similarity:Contains 1 DAPIN domain.,similarity:Contains 1 HIN-200 domain.,subunit:Homodimer.,tissue specificity:Expressed in spleen, small intestine, peripheral blood leukocytes, and testis.,

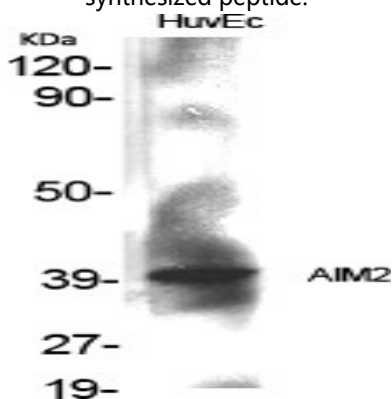
## Research Area

Cytosolic DNA-sensing pathway;

## Image Data

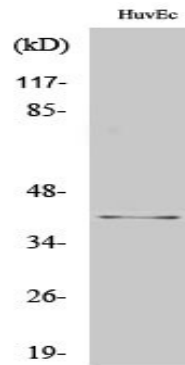


Western blot analysis of lysates from HUVEC cells, using AIM2 Antibody. The lane on the right is blocked with the synthesized peptide.



Western Blot analysis of various cells using AIM2 Polyclonal Antibody cells nucleus extracted by Minute TM Cytoplasmic and Nuclear Fractionation kit (SC-003, Invent biotech, MN, USA) .

**Product Name: AIM2 Rabbit Polyclonal Antibody**  
**Catalog #: APRab06704**



Western Blot analysis of HuvEc cells using AIM2 Polyclonal Antibody cells nucleus extracted by Minute TM Cytoplasmic and Nuclear Fractionation kit (SC-003, Inventbiotech, MN, USA) .

**Note**

For research use only.