

Product Name: AGS3 Rabbit Polyclonal Antibody
Catalog #: APRab06682



Summary

Production Name	AGS3 Rabbit Polyclonal Antibody
Description	Rabbit Polyclonal Antibody
Host	Rabbit
Application	IHC,ELISA
Reactivity	Human,Mouse,Rat

Performance

Conjugation	Unconjugated
Modification	Unmodified
Isotype	IgG
Clonality	Polyclonal
Form	Liquid
Storage	Store at 4°C short term. Aliquot and store at -20°C long term. Avoid freeze/thaw cycles.
Buffer	Liquid in PBS containing 50% glycerol, 0.5% BSA and 0.02% New type preservative N.
Purification	Affinity purification

Immunogen

Gene Name	GPSM1
Alternative Names	GPSM1; AGS3; G-protein-signaling modulator 1; Activator of G-protein signaling 3
Gene ID	26086.0
SwissProt ID	Q86YR5.Synthesized peptide derived from the Internal region of human AGS3.

Application

Dilution Ratio IHC 1:100-1:300 ELISA: 1:5000

Molecular Weight

Background

G-protein signaling modulators (GPSMs) play diverse functional roles through their interaction with G-protein subunits. This gene encodes a receptor-independent activator of G protein signaling, which is one of several factors that influence

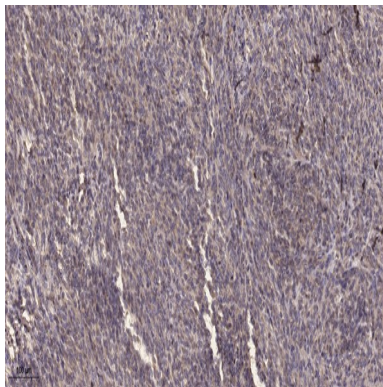
Product Name: AGS3 Rabbit Polyclonal Antibody
Catalog #: APRab06682



the basal activity of G-protein signaling systems. The protein contains seven tetratricopeptide repeats in its N-terminal half and four G-protein regulatory (GPR) motifs in its C-terminal half. Multiple alternatively spliced transcript variants encoding different isoforms have been found for this gene. [provided by RefSeq, Dec 2011],domain:The GoLoco domains mediate interaction with G(i/o) alpha (By similarity). The GoLoco domains are essential for the GDI activity toward G(i/o) alpha.,function:Guanine nucleotide dissociation inhibitor (GDI) which functions as a receptor-independent activator of heterotrimeric G-protein signaling. Keeps G(i/o) alpha subunit in its GDP-bound form thus uncoupling heterotrimeric G-proteins signaling from G protein-coupled receptors. Controls spindle orientation and asymmetric cell fate of cerebral cortical progenitors. May also be involved in macroautophagy in intestinal cells. May play a role in drug addiction.,PTM:Phosphorylation regulates interaction with G(i/o) alpha.,similarity:Belongs to the GPSM family.,similarity:Contains 4 GoLoco domains.,similarity:Contains 9 TPR repeats.,subunit:Interacts with GNAI1, GNAI2 and GNAI3 preferentially in their GDP-bound state. May also interact with GNAO1. Interacts with STK11/LKB1 and MACF1 (By similarity). Interacts with INSC/inscuteable and FRMPD1.,tissue specificity:Expressed in intestinal cells.,

Research Area

Image Data



Immunohistochemical analysis of paraffin-embedded human Colon cancer. 1, Antibody was diluted at 1:200 (4° overnight) .
2, Tris-EDTA,pH9.0 was used for antigen retrieval. 3,Secondary antibody was diluted at 1:200 (room temperature, 45min) .

Note

For research use only.