

Product Name: AFG3L2 Rabbit Polyclonal Antibody
Catalog #: APRab06664



Summary

Production Name	AFG3L2 Rabbit Polyclonal Antibody
Description	Rabbit Polyclonal Antibody
Host	Rabbit
Application	WB
Reactivity	Human,Rat,Mouse

Performance

Conjugation	Unconjugated
Modification	Unmodified
Isotype	IgG
Clonality	Polyclonal
Form	Liquid
Storage	Store at 4°C short term. Aliquot and store at -20°C long term. Avoid freeze/thaw cycles.
Buffer	Liquid in PBS containing 50% glycerol, 0.5% BSA and 0.02% New type preservative N.
Purification	Affinity purification

Immunogen

Gene Name	AFG3L2
Alternative Names	AFG3-like protein 2 (EC 3.4.24.-) (Paraplegin-like protein)
Gene ID	10939.0
SwissProt ID	Q9Y4W6.Synthesized peptide derived from human AFG3L2. at AA range: 744-793

Application

Dilution Ratio	WB 1:500-2000, ELISA 1:10000-20000
Molecular Weight	88kD

Background

This gene encodes a protein localized in mitochondria and closely related to paraplegin. The paraplegin gene is responsible for an autosomal recessive form of hereditary spastic paraplegia. This gene is a candidate gene for other hereditary spastic

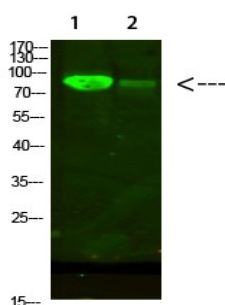
Product Name: AFG3L2 Rabbit Polyclonal Antibody
Catalog #: APRab06664



paraplegias or neurodegenerative disorders. [provided by RefSeq, Jul 2008],cofactor: Binds 1 zinc ion per subunit .,function: Putative ATP-dependent protease.,similarity: In the C-terminal section; belongs to the peptidase M41 family.,similarity: In the N-terminal section; belongs to the AAA ATPase family.,tissue specificity: Ubiquitous.,

Research Area

Image Data



Western Blot analysis of 1,mouse-heart 2,293T cells using primary antibody diluted at 1:500 (4°C overnight) . Secondary antibody: Goat Anti-rabbit IgG IRDye 800 (diluted at 1:5000, 25°C, 1 hour)

Note

For research use only.