

Summary

Production Name	ADP-GK Rabbit Polyclonal Antibody
Description	Rabbit Polyclonal Antibody
Host	Rabbit
Application	WB
Reactivity	Human,Mouse,Rat

Performance

Conjugation	Unconjugated
Modification	Unmodified
Isotype	IgG
Clonality	Polyclonal
Form	Liquid
Storage	Store at 4°C short term. Aliquot and store at -20°C long term. Avoid freeze/thaw cycles.
Buffer	Liquid in PBS containing 50% glycerol, 0.5% BSA and 0.02% New type preservative N.
Purification	Affinity purification

Immunogen

Gene Name	ADPGK
Alternative Names	ADPGK; PSEC0260; ADP-dependent glucokinase; ADP-GK; ADPGK; RbBP-35
Gene ID	83440.0
SwissProt ID	Q9BRR6.The antiserum was produced against synthesized peptide derived from human ADPGK. AA range:241-290

Application

Dilution Ratio	WB 1:500-1:2000. ELISA: 1:40000.
Molecular Weight	47kD

Background

ADPGK (EC 2.7.1.147) catalyzes the ADP-dependent phosphorylation of glucose to glucose-6-phosphate and may play a

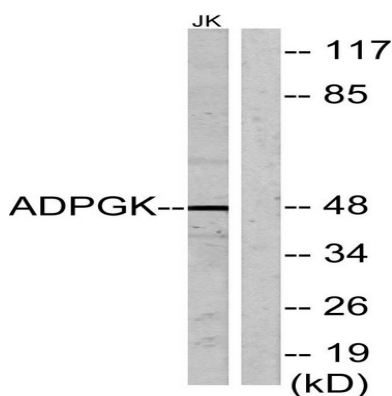
Product Name: ADP-GK Rabbit Polyclonal Antibody
Catalog #: APRab06643



role in glycolysis, possibly during ischemic conditions (Ronimus and Morgan, 2004 [PubMed 14975750]).[supplied by OMIM, Mar 2008],catalytic activity:ADP + D-glucose = AMP + D-glucose 6-phosphate.,cofactor:Binds 1 magnesium ion per subunit.,function:Catalyzes the phosphorylation of D-glucose to D-glucose 6-phosphate using ADP as the phosphate donor. GDP and CDP can replace ADP, but with reduced efficiency.,pathway:Carbohydrate degradation; glycolysis.,similarity:Belongs to the ADP-dependent glucokinase family.,similarity:Contains 1 ADPK (ADP-dependent kinase) domain.,subunit:Monomer.,

Research Area

Image Data



Western blot analysis of lysates from Jurkat cells, using ADPGK Antibody. The lane on the right is blocked with the synthesized peptide.

Note

For research use only.