
Summary

Production Name	Adducin α/β Rabbit Polyclonal Antibody
Description	Rabbit Polyclonal Antibody
Host	Rabbit
Application	IF,IHC,WB,ELISA
Reactivity	Human,Mouse,Rat

Performance

Conjugation	Unconjugated
Modification	Unmodified
Isotype	IgG
Clonality	Polyclonal
Form	Liquid
Storage	Store at 4°C short term. Aliquot and store at -20°C long term. Avoid freeze/thaw cycles.
Buffer	Liquid in PBS containing 50% glycerol, 0.5% BSA and 0.02% New type preservative N.
Purification	Affinity purification

Immunogen

Gene Name	ADD1/ADD2
Alternative Names	ADD1; ADDA; Alpha-adducin; Erythrocyte adducin subunit alpha; ADD2; ADDB; Beta-adducin; Erythrocyte adducin subunit beta
Gene ID	118/119
SwissProt ID	P35611/P35612.The antiserum was produced against synthesized peptide derived from human ADD1. AA range:688-737

Application

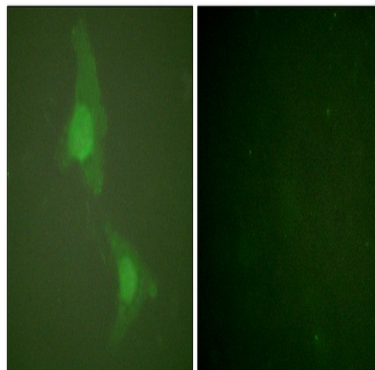
Dilution Ratio	WB 1:500 - 1:2000. IHC 1:100 - 1:300. IF 1:200 - 1:1000. ELISA: 1:40000. Not yet tested in other applications.
Molecular Weight	80kD

Background

adducin 1(ADD1) Homo sapiens Adducins are a family of cytoskeleton proteins encoded by three genes (alpha, beta, gamma). Adducin is a heterodimeric protein that consists of related subunits, which are produced from distinct genes but share a similar structure. Alpha- and beta-adducin include a protease-resistant N-terminal region and a protease-sensitive, hydrophilic C-terminal region. Alpha- and gamma-adducins are ubiquitously expressed. In contrast, beta-adducin is expressed at high levels in brain and hematopoietic tissues. Adducin binds with high affinity to Ca^{2+} /calmodulin and is a substrate for protein kinases A and C. Alternative splicing results in multiple variants encoding distinct isoforms; however, not all variants have been fully described. [provided by RefSeq, Jul 2008], alternative products: Additional isoforms seem to exist, domain: Each subunit is comprised of three regions: a NH2-terminal protease-resistant globular head region, a short connecting subdomain, and a protease-sensitive tail region., function: Membrane-cytoskeleton-associated protein that promotes the assembly of the spectrin-actin network. Binds to calmodulin., PTM: The N-terminus is blocked., similarity: Belongs to the aldolase class II family. Adducin subfamily., subunit: Heterodimer of an alpha and a beta subunit or an alpha and a gamma subunit. Binds ROCK1., tissue specificity: Expressed in all tissues. Found in much higher levels in reticulocytes than the beta subunit.,

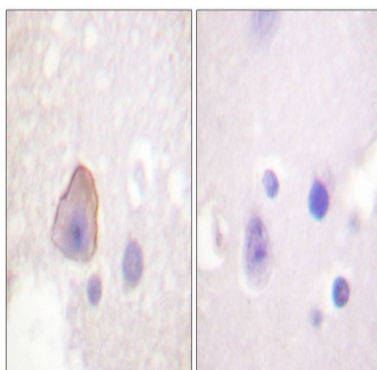
Research Area

Image Data

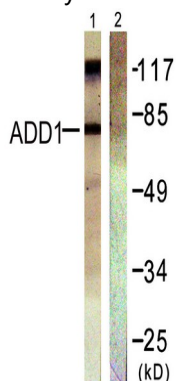


Immunofluorescence analysis of HeLa cells, using ADD1 Antibody. The picture on the right is blocked with the synthesized peptide.

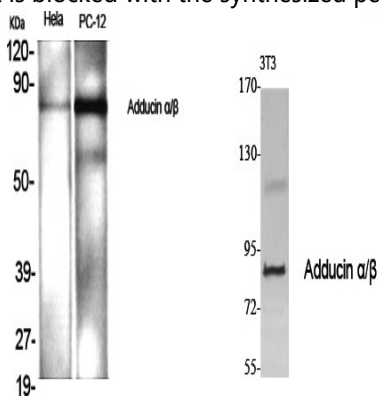
Product Name: Adducin α/β Rabbit Polyclonal Antibody
Catalog #: APRab06618



Immunohistochemistry analysis of paraffin-embedded human brain tissue, using ADD1 Antibody. The picture on the right is blocked with the synthesized peptide.

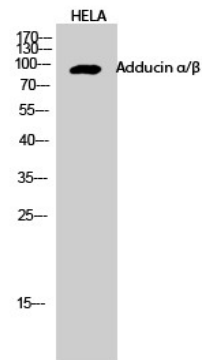


Western blot analysis of lysates from HeLa cells, treated with Forskolin 40nM 30', using ADD1 Antibody. The lane on the right is blocked with the synthesized peptide.



Western Blot analysis of various cells using Adducin α/β Polyclonal Antibody diluted at 1: 1000

Product Name: Adducin α/β Rabbit Polyclonal Antibody
Catalog #: APRab06618



Western Blot analysis of HELA cells using Adducin α/β Polyclonal Antibody diluted at 1: 1000

Note

For research use only.