

Summary

Production Name	ADCK4 Rabbit Polyclonal Antibody
Description	Rabbit Polyclonal Antibody
Host	Rabbit
Application	IF, WB, IHC, ELISA
Reactivity	Human, Mouse, Rat

Performance

Conjugation	Unconjugated
Modification	Unmodified
Isotype	IgG
Clonality	Polyclonal
Form	Liquid
Storage	Store at 4°C short term. Aliquot and store at -20°C long term. Avoid freeze/thaw cycles.
Buffer	Liquid in PBS containing 50% glycerol, 0.5% BSA and 0.02% New type preservative N.
Purification	Affinity purification

Immunogen

Gene Name	ADCK4
Alternative Names	ADCK4; Uncharacterized aarF domain-containing protein kinase 4
Gene ID	79934.0
SwissProt ID	Q96D53. The antiserum was produced against synthesized peptide derived from human ADCK4. AA range: 31-80

Application

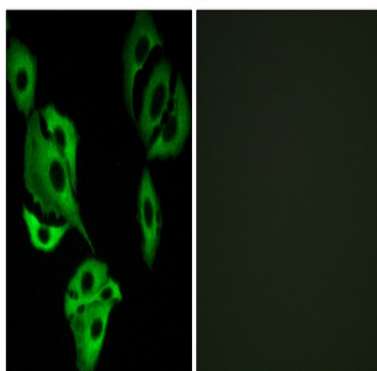
Dilution Ratio	WB 1:500 - 1:2000. IHC 1:100 - 1:300. IF 1:200 - 1:1000. ELISA: 1:10000. Not yet tested in other applications.
Molecular Weight	65kD

Background

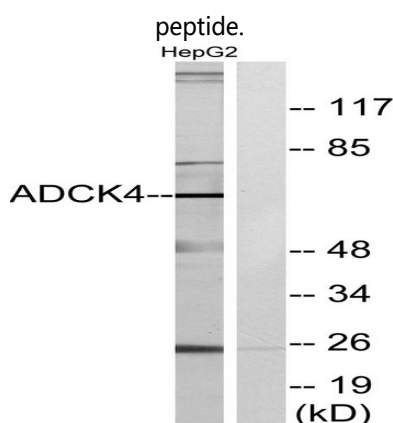
This gene encodes a protein with two copies of a domain found in protein kinases. The encoded protein has a complete protein kinase catalytic domain, and a truncated domain that contains only the active and binding sites of the protein kinase domain, however, it is not known whether the protein has any kinase activity. Multiple transcript variants encoding different isoforms have been found for this gene. [provided by RefSeq, Sep 2011],function:The function of this protein is not yet clear. It is not known if it has protein kinase activity and what type of substrate it would phosphorylate (Ser, Thr or Tyr).,similarity:Belongs to the protein kinase superfamily. ADCK protein kinase family.,similarity:Contains 1 protein kinase domain.,

Research Area

Image Data

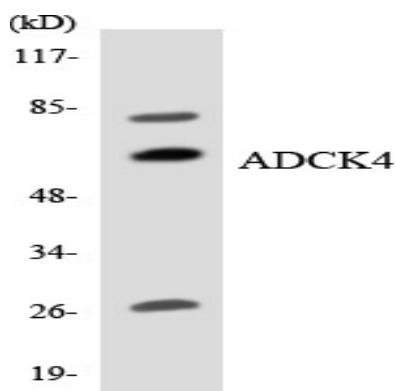


Immunofluorescence analysis of A549 cells, using ADCK4 Antibody. The picture on the right is blocked with the synthesized

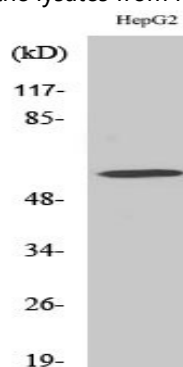


Western blot analysis of lysates from HepG2 cells, using ADCK4 Antibody. The lane on the right is blocked with the synthesized peptide.

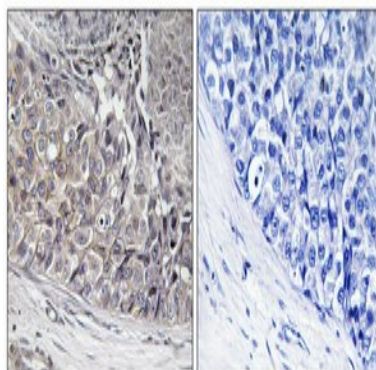
Product Name: ADCK4 Rabbit Polyclonal Antibody
Catalog #: APRab06610



Western blot analysis of the lysates from HeLa cells using ADCK4 antibody.



Western Blot analysis of various cells using ADCK4 Polyclonal Antibody



Immunohistochemical analysis of paraffin-embedded Human breast cancer. Antibody was diluted at 1:100 (4°, overnight) . High-pressure and temperature Tris-EDTA, pH 8.0 was used for antigen retrieval. Negative control (right) obtained from antibody was pre-absorbed by immunogen peptide.

Note

For research use only.