

## Summary

<b>Production Name</b>	ADCK2 Rabbit Polyclonal Antibody
<b>Description</b>	Rabbit Polyclonal Antibody
<b>Host</b>	Rabbit
<b>Application</b>	WB
<b>Reactivity</b>	Human,Rat,Mouse

## Performance

<b>Conjugation</b>	Unconjugated
<b>Modification</b>	Unmodified
<b>Isotype</b>	IgG
<b>Clonality</b>	Polyclonal
<b>Form</b>	Liquid
<b>Storage</b>	Store at 4°C short term. Aliquot and store at -20°C long term. Avoid freeze/thaw cycles.
<b>Buffer</b>	Liquid in PBS containing 50% glycerol, 0.5% BSA and 0.02% New type preservative N.
<b>Purification</b>	Affinity purification

## Immunogen

<b>Gene Name</b>	ADCK2
<b>Alternative Names</b>	ADCK2; AARF; Uncharacterized aarF domain-containing protein kinase 2
<b>Gene ID</b>	90956.0
<b>SwissProt ID</b>	Q7Z695.The antiserum was produced against synthesized peptide derived from human ADCK2. AA range:241-290

## Application

<b>Dilution Ratio</b>	WB 1:500-1:2000. ELISA: 1:10000.
<b>Molecular Weight</b>	69kD

## Background

function:The function of this protein is not yet clear. It is not known if it has protein kinase activity and what type of

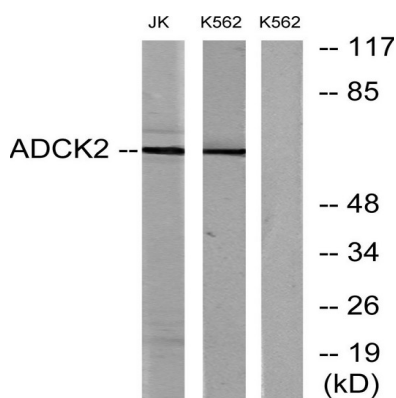
**Product Name: ADCK2 Rabbit Polyclonal Antibody**  
**Catalog #: APRab06609**



substrate it would phosphorylate (Ser, Thr or Tyr),,sequence caution:Aberrant splicing,,similarity:Belongs to the protein kinase superfamily. ADCK protein kinase family,,similarity:Contains 1 protein kinase domain,,function:The function of this protein is not yet clear. It is not known if it has protein kinase activity and what type of substrate it would phosphorylate (Ser, Thr or Tyr),,sequence caution:Aberrant splicing,,similarity:Belongs to the protein kinase superfamily. ADCK protein kinase family,,similarity:Contains 1 protein kinase domain,,

## Research Area

## Image Data



Western blot analysis of lysates from Jurkat and K562 cells, using ADCK2 Antibody. The lane on the right is blocked with the synthesized peptide.

## Note

For research use only.