

## Summary

<b>Production Name</b>	ADAM32 Rabbit Polyclonal Antibody
<b>Description</b>	Rabbit Polyclonal Antibody
<b>Host</b>	Rabbit
<b>Application</b>	WB
<b>Reactivity</b>	Human,Rat,Mouse

## Performance

<b>Conjugation</b>	Unconjugated
<b>Modification</b>	Unmodified
<b>Isotype</b>	IgG
<b>Clonality</b>	Polyclonal
<b>Form</b>	Liquid
<b>Storage</b>	Store at 4°C short term. Aliquot and store at -20°C long term. Avoid freeze/thaw cycles.
<b>Buffer</b>	Liquid in PBS containing 50% glycerol, 0.5% BSA and 0.02% New type preservative N.
<b>Purification</b>	Affinity purification

## Immunogen

<b>Gene Name</b>	ADAM32
<b>Alternative Names</b>	ADAM32; Disintegrin and metalloproteinase domain-containing protein 32; ADAM 32
<b>Gene ID</b>	203102.0
<b>SwissProt ID</b>	Q8TC27.Synthesized peptide derived from ADAM32 . at AA range: 460-540

## Application

<b>Dilution Ratio</b>	WB 1:500-1:2000. ELISA: 1:40000.
<b>Molecular Weight</b>	87kD

## Background

ADAM metallopeptidase domain 32(ADAM32) Homo sapiens This gene encodes a member of the disintegrin family of membrane-anchored proteins that play a role in diverse biological processes such as brain development, fertilization,

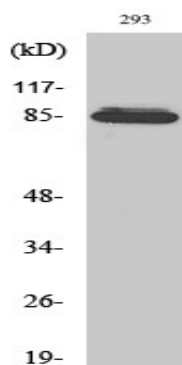
**Product Name: ADAM32 Rabbit Polyclonal Antibody**  
**Catalog #: APRab06591**



tumor development and inflammation. This gene is predominantly expressed in the testis. The encoded protein undergoes proteolytic processing to generate a mature polypeptide comprised of an metalloprotease, disintegrin and epidermal growth factor-like domains. This gene is located in a cluster of other disintegrin and metallopeptidase family genes on chromosome 8. Alternative splicing results in multiple transcript variants encoding different isoforms. [provided by RefSeq, Sep 2015],function:May play a role in sperm development and fertilization This is a non-catalytic metalloprotease-like protein.,similarity:Contains 1 disintegrin domain.,similarity:Contains 1 EGF-like domain.,similarity:Contains 1 peptidase M12B domain.,tissue specificity:Testis specific.,

## Research Area

## Image Data



Western Blot analysis of various cells using ADAM32 Polyclonal Antibody diluted at 1 : 1000

## Note

For research use only.