

**Product Name: ACSS1 Rabbit Polyclonal Antibody**  
**Catalog #: APRab06536**



## Summary

<b>Production Name</b>	ACSS1 Rabbit Polyclonal Antibody
<b>Description</b>	Rabbit Polyclonal Antibody
<b>Host</b>	Rabbit
<b>Application</b>	IHC, WB,
<b>Reactivity</b>	Human, Mouse

## Performance

<b>Conjugation</b>	Unconjugated
<b>Modification</b>	Unmodified
<b>Isotype</b>	IgG
<b>Clonality</b>	Polyclonal
<b>Form</b>	Liquid
<b>Storage</b>	Store at 4°C short term. Aliquot and store at -20°C long term. Avoid freeze/thaw cycles.
<b>Buffer</b>	Liquid in PBS containing 50% glycerol, 0.5% BSA and 0.02% New type preservative N.
<b>Purification</b>	Affinity purification

## Immunogen

<b>Gene Name</b>	ACSS1 ACSS1; ACAS2L; KIAA1846; Acetyl-coenzyme A synthetase 2-like; mitochondrial;
<b>Alternative Names</b>	Acetate--CoA ligase 2; Acetyl-CoA synthetase 2; AceCS2; Acyl-CoA synthetase short-chain family member 1
<b>Gene ID</b>	84532.0
<b>SwissProt ID</b>	Q9NUB1. The antiserum was produced against synthesized peptide derived from human ACSS1. AA range: 611-660

## Application

<b>Dilution Ratio</b>	WB 1:500 - 1:2000. IHC 1:100 - 1:300. ELISA: 1:40000..
<b>Molecular Weight</b>	75kD

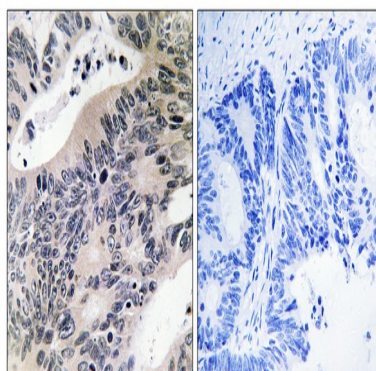
## Background

This gene encodes a mitochondrial acetyl-CoA synthetase enzyme. A similar protein in mice plays an important role in the tricarboxylic acid cycle by catalyzing the conversion of acetate to acetyl CoA. Alternatively spliced transcript variants encoding multiple isoforms have been observed for this gene. [provided by RefSeq, Nov 2011], catalytic activity: ATP + acetate + CoA = AMP + diphosphate + acetyl-CoA., function: Converts acetate to acetyl-CoA so that it can be used for oxidation through the tricarboxylic cycle to produce ATP and CO(2)., sequence caution: Sequencing errors., similarity: Belongs to the ATP-dependent AMP-binding enzyme family.,

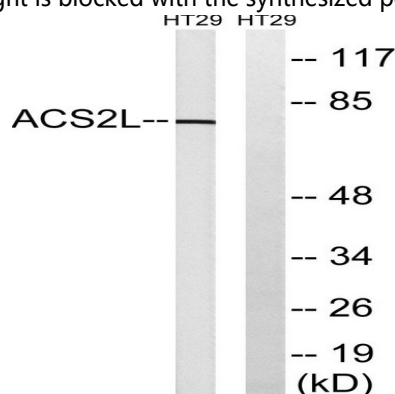
## Research Area

Glycolysis / Gluconeogenesis; Pyruvate metabolism; Propanoate metabolism;

## Image Data

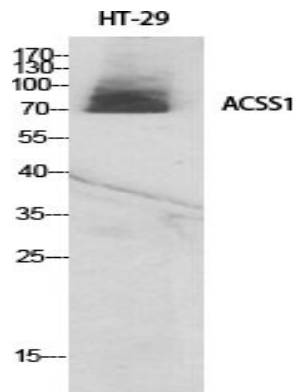


Immunohistochemistry analysis of paraffin-embedded human colon carcinoma tissue, using ACSS1 Antibody. The picture on the right is blocked with the synthesized peptide.

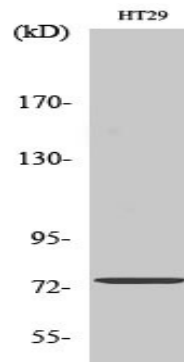


Western blot analysis of lysates from HT-29 cells, using ACSS1 Antibody. The lane on the right is blocked with the synthesized peptide.

**Product Name: ACSS1 Rabbit Polyclonal Antibody**  
**Catalog #: APRab06536**



Western Blot analysis of various cells using ACSS1 Polyclonal Antibody



Western Blot analysis of HT29 cells using ACSS1 Polyclonal Antibody

**Note**

For research use only.