
Summary

Production Name	AChR α 3 Rabbit Polyclonal Antibody
Description	Rabbit Polyclonal Antibody
Host	Rabbit
Application	WB,ELISA
Reactivity	Human,Mouse,Rat

Performance

Conjugation	Unconjugated
Modification	Unmodified
Isotype	IgG
Clonality	Polyclonal
Form	Liquid
Storage	Store at 4°C short term. Aliquot and store at -20°C long term. Avoid freeze/thaw cycles.
Buffer	Liquid in PBS containing 50% glycerol, 0.5% BSA and 0.02% New type preservative N.
Purification	Affinity purification

Immunogen

Gene Name	CHRNA3
Alternative Names	CHRNA3; NACHRA3; Neuronal acetylcholine receptor subunit alpha-3
Gene ID	1136.0
SwissProt ID	P32297.The antiserum was produced against synthesized peptide derived from human AChRalpha3. AA range:90-139

Application

Dilution Ratio	WB 1:500 - 1:2000. ELISA: 1:10000
Molecular Weight	57kD

Background

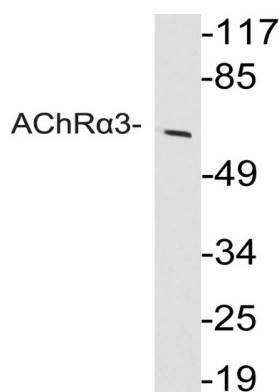
Product Name: AChR α 3 Rabbit Polyclonal Antibody
Catalog #: APRab06498



This locus encodes a member of the nicotinic acetylcholine receptor family of proteins. Members of this family of proteins form pentameric complexes comprised of both alpha and beta subunits. This locus encodes an alpha-type subunit, as it contains characteristic adjacent cysteine residues. The encoded protein is a ligand-gated ion channel that likely plays a role in neurotransmission. Polymorphisms in this gene have been associated with an increased risk of smoking initiation and an increased susceptibility to lung cancer. Alternatively spliced transcript variants have been described. [provided by RefSeq, Nov 2009],disease:Genetic variations in CHRNA3 may be associated with susceptibility to lung cancer type 2 (LNCR2) [MIM:612052],disease:Genetic variations in CHRNA3 may be associated with susceptibility to peripheral arterial occlusive disease type 2 (PAOD2) [MIM:612052]. PAOD results from atherosclerosis of large and medium peripheral arteries, as well as the aorta. Many risk factors contribute to PAOD, including smoking, diabetes, hypertension, and hyperlipidemia. PAOD often coexists with coronary artery disease and cerebrovascular disease.,function:After binding acetylcholine, the AChR responds by an extensive change in conformation that affects all subunits and leads to opening of an ion-conducting channel across the plasma membrane.,similarity:Belongs to the ligand-gated ionic channel (TC 1.A.9) family.,subunit:Neuronal AChR is composed of two different types of subunits: alpha and beta. Alpha-3 subunit can be combined to beta-2 or beta-4 to give rise to functional receptors. Interacts with RIC3; which is required for proper folding and assembly.,

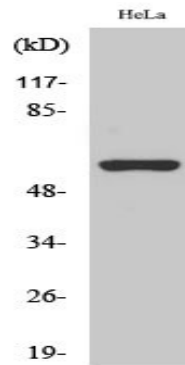
Research Area

Image Data



Western blot analysis of lysate from HeLa cells, using AChR α 3 antibody.

Product Name: AChR α 3 Rabbit Polyclonal Antibody
Catalog #: APRab06498



Western Blot analysis of various cells using AChR α 3 Polyclonal Antibody

Note

For research use only.