
Summary

| | |
|------------------------|----------------------------------|
| Production Name | ACBD6 Rabbit Polyclonal Antibody |
| Description | Rabbit Polyclonal Antibody |
| Host | Rabbit |
| Application | WB,ELISA |
| Reactivity | Human,Mouse,Rat |

Performance

| | |
|---------------------|--|
| Conjugation | Unconjugated |
| Modification | Unmodified |
| Isotype | IgG |
| Clonality | Polyclonal |
| Form | Liquid |
| Storage | Store at 4°C short term. Aliquot and store at -20°C long term. Avoid freeze/thaw cycles. |
| Buffer | Liquid in PBS containing 50% glycerol, 0.5% BSA and 0.02% New type preservative N. |
| Purification | Affinity purification |

Immunogen

| | |
|--------------------------|--|
| Gene Name | ACBD6 |
| Alternative Names | ACBD6; Acyl-CoA-binding domain-containing protein 6 |
| Gene ID | 84320.0 |
| SwissProt ID | Q9BR61.The antiserum was produced against synthesized peptide derived from human ACBD6. AA range:121-170 |

Application

| | |
|-------------------------|-------------------------------------|
| Dilution Ratio | WB 1:500 - 1:2000. ELISA: 1:10000.. |
| Molecular Weight | 30kD |

Background

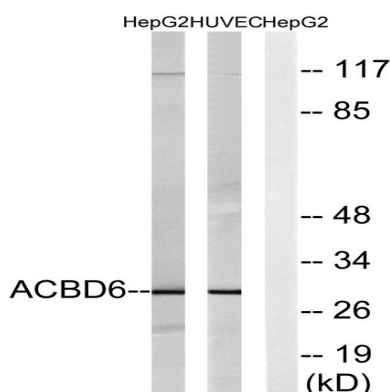
Product Name: ACBD6 Rabbit Polyclonal Antibody
Catalog #: APRab06474



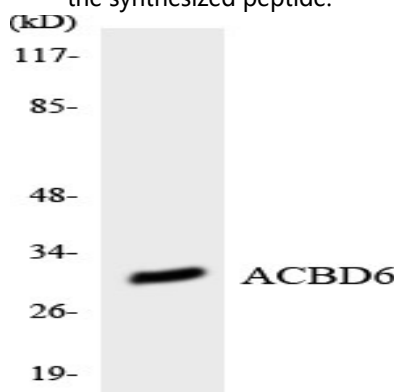
function: Binds long-chain acyl-coenzyme A molecules with a strong preference for unsaturated C18:1-CoA, lower affinity for unsaturated C20:4-CoA, and very weak affinity for saturated C16:0-CoA. Does not bind fatty acids., similarity: Contains 1 ACB (acyl-CoA-binding) domain., similarity: Contains 2 ANK repeats., subunit: Monomer., tissue specificity: Detected in placenta and spleen (at protein level). Detected in placenta, umbilical cord blood, CD34-positive hematopoietic progenitor cells and bone marrow., function: Binds long-chain acyl-coenzyme A molecules with a strong preference for unsaturated C18:1-CoA, lower affinity for unsaturated C20:4-CoA, and very weak affinity for saturated C16:0-CoA. Does not bind fatty acids., similarity: Contains 1 ACB (acyl-CoA-binding) domain., similarity: Contains 2 ANK repeats., subunit: Monomer., tissue specificity: Detected in placenta and spleen (at protein level). Detected in placenta, umbilical cord blood, CD34-positive hematopoietic progenitor cells and bone marrow.,

Research Area

Image Data

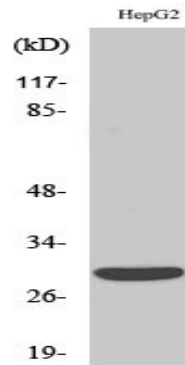


Western blot analysis of lysates from HepG2 and HUVEC cells, using ACBD6 Antibody. The lane on the right is blocked with the synthesized peptide.



Western blot analysis of the lysates from K562 cells using ACBD6 antibody.

Product Name: ACBD6 Rabbit Polyclonal Antibody
Catalog #: APRab06474



Western Blot analysis of various cells using ACBD6 Polyclonal Antibody diluted at 1: 1000

Note

For research use only.