

---

## Summary

<b>Production Name</b>	ABCB7 Rabbit Polyclonal Antibody
<b>Description</b>	Rabbit Polyclonal Antibody
<b>Host</b>	Rabbit
<b>Application</b>	IHC,WB,
<b>Reactivity</b>	Human,Rat,Mouse

## Performance

<b>Conjugation</b>	Unconjugated
<b>Modification</b>	Unmodified
<b>Isotype</b>	IgG
<b>Clonality</b>	Polyclonal
<b>Form</b>	Liquid
<b>Storage</b>	Store at 4°C short term. Aliquot and store at -20°C long term. Avoid freeze/thaw cycles.
<b>Buffer</b>	Liquid in PBS containing 50% glycerol, 0.5% BSA and 0.02% New type preservative N.
<b>Purification</b>	Affinity purification

## Immunogen

<b>Gene Name</b>	ABCB7
<b>Alternative Names</b>	ABCB7; ABC7; ATP-binding cassette sub-family B member 7; mitochondrial; ATP-binding cassette transporter 7; ABC transporter 7 protein
<b>Gene ID</b>	22.0
<b>SwissProt ID</b>	O75027.The antiserum was produced against synthesized peptide derived from human ABCB7. AA range:691-740

## Application

<b>Dilution Ratio</b>	WB 1:500 - 1:2000. IHC 1:100 - 1:300. ELISA: 1:40000..
<b>Molecular Weight</b>	Human:83kD,Mouse/Rat 100kD

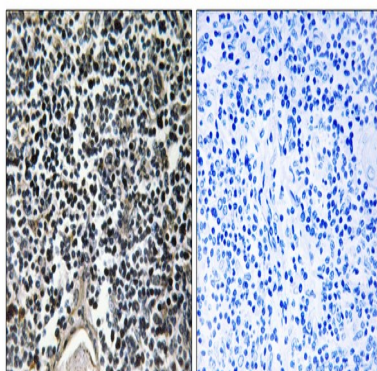
## Background

The membrane-associated protein encoded by this gene is a member of the superfamily of ATP-binding cassette (ABC) transporters. ABC proteins transport various molecules across extra- and intra-cellular membranes. ABC genes are divided into seven distinct subfamilies (ABC1, MDR/TAP, MRP, ALD, OABP, GCN20, White). This protein is a member of the MDR/TAP subfamily. Members of the MDR/TAP subfamily are involved in multidrug resistance as well as antigen presentation. This gene encodes a half-transporter involved in the transport of heme from the mitochondria to the cytosol. With iron/sulfur cluster precursors as its substrates, this protein may play a role in metal homeostasis. Mutations in this gene have been associated with mitochondrial iron accumulation and isodicentric (X)(q13) and sideroblastic anemia. Alternatively spliced transcript variants encoding multiple isoforms have disease: Defects in ABCB7 are the cause of X-linked sideroblastic anemia with ataxia (ASAT) [MIM:301310]. ASAT is a recessive disorder characterized by an infantile to early childhood onset of nonprogressive cerebellar ataxia and mild anemia with hypochromia and microcytosis. function: Could be involved in the transport of heme from the mitochondria to the cytosol. Plays a central role in the maturation of cytosolic iron-sulfur (Fe/S) cluster-containing proteins. similarity: Belongs to the ABC transporter family. Heavy Metal importer (TC 3.A.1.210) subfamily. similarity: Contains 1 ABC transmembrane type-1 domain. similarity: Contains 1 ABC transporter domain. subunit: Homodimer or heterodimer .

## Research Area

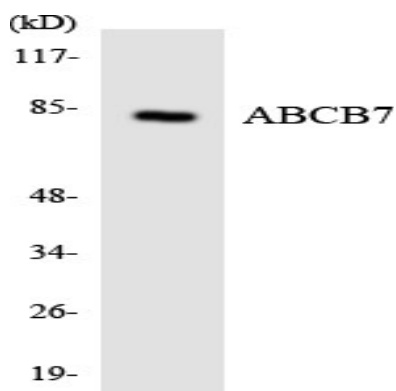
ABC transporters;

## Image Data

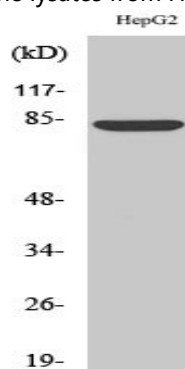


Immunohistochemistry analysis of paraffin-embedded human thymus gland, using ABCB7 Antibody. The picture on the right is blocked with the synthesized peptide.

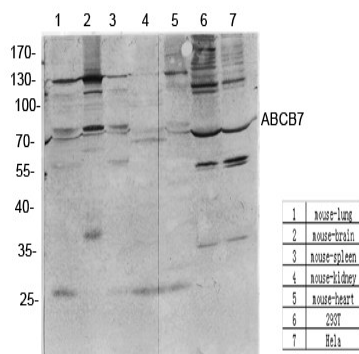
Product Name: ABCB7 Rabbit Polyclonal Antibody  
Catalog #: APRab06405



Western blot analysis of the lysates from HUVEC cells using ABCB7 antibody.



Western Blot analysis of various cells using ABCB7 Polyclonal Antibody diluted at 1: 1000



Western Blot analysis of various cells using antibody diluted at 1:1000. Secondary antibody was diluted at 1:20000

## Note

For research use only.