

Summary

Production Name	ABCB10 Rabbit Polyclonal Antibody
Description	Rabbit Polyclonal Antibody
Host	Rabbit
Application	WB,ELISA
Reactivity	Human,Rat,Mouse

Performance

Conjugation	Unconjugated
Modification	Unmodified
Isotype	IgG
Clonality	Polyclonal
Form	Liquid
Storage	Store at 4°C short term. Aliquot and store at -20°C long term. Avoid freeze/thaw cycles.
Buffer	Liquid in PBS containing 50% glycerol, 0.5% BSA and 0.02% New type preservative N.
Purification	Affinity purification

Immunogen

Gene Name	ABCB10
Alternative Names	ABCB10; ATP-binding cassette sub-family B member 10; mitochondrial; ATP-binding cassette transporter 10; ABC transporter 10 protein; Mitochondrial ATP-binding cassette 2; M-ABC2
Gene ID	23456.0
SwissProt ID	Q9NRK6.The antiserum was produced against synthesized peptide derived from human ABCB10. AA range:441-490

Application

Dilution Ratio	WB 1:500 - 1:2000. ELISA: 1:40000
Molecular Weight	79kD

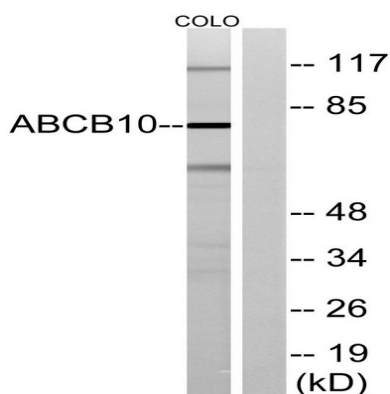
Background

The membrane-associated protein encoded by this gene is a member of the superfamily of ATP-binding cassette (ABC) transporters. ABC proteins transport various molecules across extra- and intra-cellular membranes. ABC genes are divided into seven distinct subfamilies (ABC1, MDR/TAP, MRP, ALD, OABP, GCN20, White). This protein is a member of the MDR/TAP subfamily. Members of the MDR/TAP subfamily are involved in multidrug resistance. The function of this mitochondrial protein is unknown. [provided by RefSeq, Jul 2008],function:May mediate critical mitochondrial transport functions related to heme biosynthesis.,similarity:Belongs to the ABC transporter family.,similarity:Belongs to the ABC transporter family. Mitochondrial peptide exporter (TC 3.A.1.212) subfamily.,similarity:Contains 1 ABC transmembrane type-1 domain.,similarity:Contains 1 ABC transporter domain.,subunit:Homodimer or heterodimer .,tissue specificity:Ubiquitous. Highly expressed in bone marrow, expressed at intermediate to high levels in skeletal muscle, small intestine, thyroid, heart, brain, placenta, liver, pancreas, prostate, testis, ovary, leukocyte, stomach, spinal cord, lymph node, trachea and adrenal gland, and low levels are found in lung, kidney, spleen, thymus and colon.,

Research Area

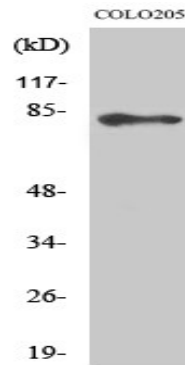
ABC transporters;

Image Data



Western blot analysis of lysates from COLO cells, using ABCB10 Antibody. The lane on the right is blocked with the synthesized peptide.

Product Name: ABCB10 Rabbit Polyclonal Antibody
Catalog #: APRab06403



Western Blot analysis of various cells using ABCB10 Polyclonal Antibody

Note

For research use only.