

## Summary

<b>Production Name</b>	ABCA8 Rabbit Polyclonal Antibody
<b>Description</b>	Rabbit Polyclonal Antibody
<b>Host</b>	Rabbit
<b>Application</b>	WB,ELISA
<b>Reactivity</b>	Human,Mouse

## Performance

<b>Conjugation</b>	Unconjugated
<b>Modification</b>	Unmodified
<b>Isotype</b>	IgG
<b>Clonality</b>	Polyclonal
<b>Form</b>	Liquid
<b>Storage</b>	Store at 4°C short term. Aliquot and store at -20°C long term. Avoid freeze/thaw cycles.
<b>Buffer</b>	Liquid in PBS containing 50% glycerol, 0.5% BSA and 0.02% New type preservative N.
<b>Purification</b>	Affinity purification

## Immunogen

<b>Gene Name</b>	ABCA8
<b>Alternative Names</b>	ABCA8; KIAA0822; ATP-binding cassette sub-family A member 8
<b>Gene ID</b>	10351.0
<b>SwissProt ID</b>	O94911.The antiserum was produced against synthesized peptide derived from human ABCA8. AA range:1151-1200

## Application

<b>Dilution Ratio</b>	WB 1:500 - 1:2000. ELISA: 1:40000. Not yet tested in other applications.
<b>Molecular Weight</b>	179kD

## Background

**Product Name: ABCA8 Rabbit Polyclonal Antibody**  
**Catalog #: APRab06398**

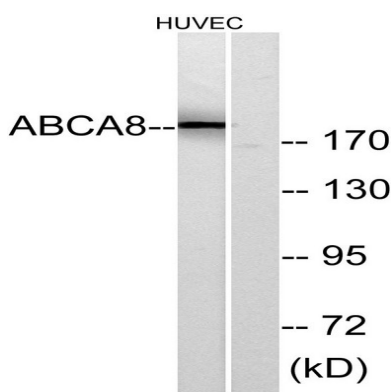


The membrane-associated protein encoded by this gene is a member of the superfamily of ATP-binding cassette (ABC) transporters. ABC proteins transport various molecules across extra- and intracellular membranes. ABC genes are divided into seven distinct subfamilies (ABC1, MDR/TAP, MRP, ALD, OABP, GCN20, White). This protein is a member of the ABC1 subfamily. Members of the ABC1 subfamily comprise the only major ABC subfamily found exclusively in multicellular eukaryotes. The encoded protein may regulate lipid metabolism and be involved in the formation and maintenance of myelin. Alternative splicing results in multiple transcript variants. [provided by RefSeq, Jan 2014],function:ATP-dependent lipophilic drug transporter.,similarity:Belongs to the ABC transporter family. ABCA subfamily.,similarity:Contains 2 ABC transporter domains.,tissue specificity:Widely expressed with higher expression in heart, skeletal muscle and liver.,

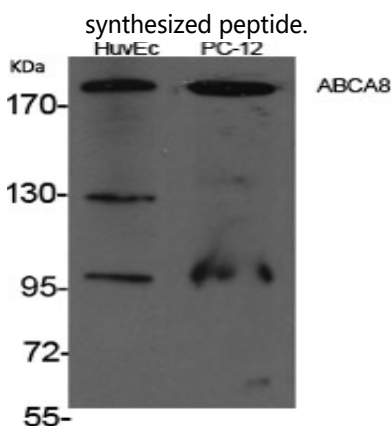
### Research Area

ABC transporters;

### Image Data

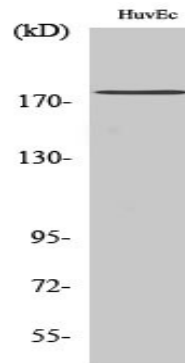


Western blot analysis of lysates from HUVEC cells, using ABCA8 Antibody. The lane on the right is blocked with the



Western Blot analysis of various cells using ABCA8 Polyclonal Antibody

**Product Name: ABCA8 Rabbit Polyclonal Antibody**  
**Catalog #: APRab06398**



Western Blot analysis of HuvEc cells using ABCA8 Polyclonal Antibody

**Note**

For research use only.