

**Product Name: AACT Rabbit Polyclonal Antibody**  
**Catalog #: APRab06375**



## Summary

<b>Production Name</b>	AACT Rabbit Polyclonal Antibody
<b>Description</b>	Rabbit Polyclonal Antibody
<b>Host</b>	Rabbit
<b>Application</b>	WB,IHC,ELISA
<b>Reactivity</b>	Human,Rat,Mouse

## Performance

<b>Conjugation</b>	Unconjugated
<b>Modification</b>	Unmodified
<b>Isotype</b>	IgG
<b>Clonality</b>	Polyclonal
<b>Form</b>	Liquid
<b>Storage</b>	Store at 4°C short term. Aliquot and store at -20°C long term. Avoid freeze/thaw cycles.
<b>Buffer</b>	Liquid in PBS containing 50% glycerol, 0.5% BSA and 0.02% New type preservative N.
<b>Purification</b>	Affinity purification

## Immunogen

<b>Gene Name</b>	SERPINA3
<b>Alternative Names</b>	SERPINA3; AACT; GIG24; GIG25; Alpha-1-antichymotrypsin; ACT; Cell growth-inhibiting gene 24/25 protein; Serpin A3
<b>Gene ID</b>	12.0
<b>SwissProt ID</b>	P01011.The antiserum was produced against synthesized peptide derived from the Internal region of human SERPINA3. AA range:251-300

## Application

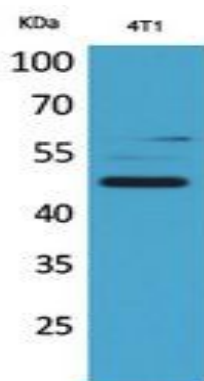
<b>Dilution Ratio</b>	WB 1:500 - 1:2000. IHC: 1:100-1:300. ELISA: 1:20000..
<b>Molecular Weight</b>	46kD

## Background

The protein encoded by this gene is a plasma protease inhibitor and member of the serine protease inhibitor class. Polymorphisms in this protein appear to be tissue specific and influence protease targeting. Variations in this protein's sequence have been implicated in Alzheimer's disease, and deficiency of this protein has been associated with liver disease. Mutations have been identified in patients with Parkinson disease and chronic obstructive pulmonary disease. [provided by RefSeq, Jul 2008],caution:It is uncertain whether Met-1 or Met-4 is the initiator.,disease:Defects in SERPINA3 may be a cause of chronic obstructive pulmonary disease (COPD) [MIM:107280].,domain:The reactive center loop (RCL) extends out from the body of the protein and directs binding to the target protease. The protease cleaves the serpin at the reactive site within the RCL, establishing a covalent linkage between the carboxyl group of the serpin reactive site and the serine hydroxyl of the protease. The resulting inactive serpin-protease complex is highly stable.,function:Although its physiological function is unclear, it can inhibit neutrophil cathepsin G and mast cell chymase, both of which can convert angiotensin-1 to the active angiotensin-2.,miscellaneous:Alpha-1-antichymotrypsin can bind DNA.,online information:Alpha-1 antichymotrypsin entry,sequence caution:Translation N-terminally shortened.,similarity:Belongs to the serpin family.,subunit:Interacts with DNAJC1.,tissue specificity:Plasma. Synthesized in the liver. Like the related alpha-1-antitrypsin, its concentration increases in the acute phase of inflammation or infection. Found in the myloid plaques from the hippocampus of Alzheimer's disease brains.,

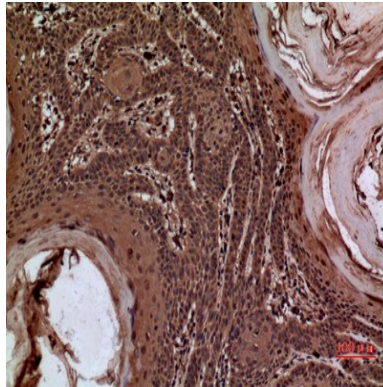
## Research Area

## Image Data

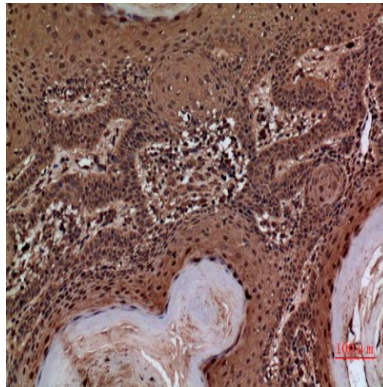


Western Blot analysis of 4T1 cells using AACT Polyclonal Antibody.. Secondary antibody was diluted at 1:20000 cells nucleus extracted by Minute TM Cytoplasmic and Nuclear Fractionation kit (SC-003, Invent biotech, MN, USA) .

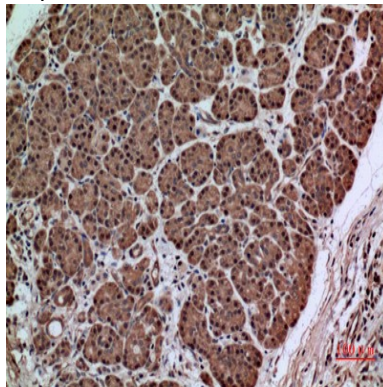
**Product Name: AACT Rabbit Polyclonal Antibody**  
**Catalog #: APRab06375**



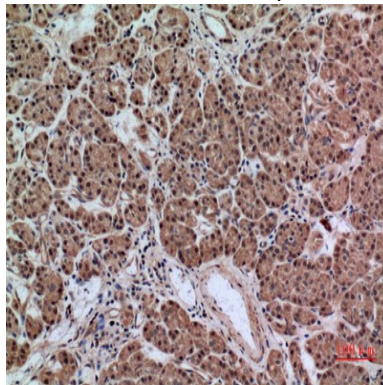
Immunohistochemical analysis of paraffin-embedded human-skin, antibody was diluted at 1:100



Immunohistochemical analysis of paraffin-embedded human-skin, antibody was diluted at 1:100



Immunohistochemical analysis of paraffin-embedded human-pancreas-cancer, antibody was diluted at 1:100



**Product Name: AACT Rabbit Polyclonal Antibody**  
**Catalog #: APRab06375**



---

Immunohistochemical analysis of paraffin-embedded human-pancreas-cancer, antibody was diluted at 1:100

**Note**

For research use only.