

**Product Name: A Cyclase VIII Rabbit Polyclonal Antibody**  
**Catalog #: APRab06358**

---

## Summary

<b>Production Name</b>	A Cyclase VIII Rabbit Polyclonal Antibody
<b>Description</b>	Rabbit Polyclonal Antibody
<b>Host</b>	Rabbit
<b>Application</b>	IHC,IF,ELISA
<b>Reactivity</b>	Human,Mouse,Rat

## Performance

<b>Conjugation</b>	Unconjugated
<b>Modification</b>	Unmodified
<b>Isotype</b>	IgG
<b>Clonality</b>	Polyclonal
<b>Form</b>	Liquid
<b>Storage</b>	Store at 4°C short term. Aliquot and store at -20°C long term. Avoid freeze/thaw cycles.
<b>Buffer</b>	Liquid in PBS containing 50% glycerol, 0.5% BSA and 0.02% New type preservative N.
<b>Purification</b>	Affinity purification

## Immunogen

<b>Gene Name</b>	ADCY8
<b>Alternative Names</b>	ADCY8; Adenylate cyclase type 8; ATP pyrophosphate-lyase 8; Adenylate cyclase type VIII; Adenylyl cyclase 8; AC8; Ca(2+)/calmodulin-activated adenylyl cyclase
<b>Gene ID</b>	114.0
<b>SwissProt ID</b>	P40145.The antiserum was produced against synthesized peptide derived from human ADCY8. AA range:591-640

## Application

<b>Dilution Ratio</b>	IHC 1:100 - 1:300. IF 1:200 - 1:1000. ELISA: 1:40000. Not yet tested in other applications.
<b>Molecular Weight</b>	

**Product Name: A Cyclase VIII Rabbit Polyclonal Antibody**  
**Catalog #: APRab06358**

---

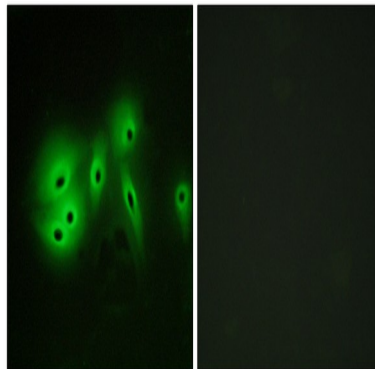
## Background

Adenylate cyclase is a membrane bound enzyme that catalyses the formation of cyclic AMP from ATP. The enzymatic activity is under the control of several hormones, and different polypeptides participate in the transduction of the signal from the receptor to the catalytic moiety. Stimulatory or inhibitory receptors (Rs and Ri) interact with G proteins (Gs and Gi) that exhibit GTPase activity and they modulate the activity of the catalytic subunit of the adenylyl cyclase [provided by RefSeq, Jul 2008], catalytic activity: ATP = 3',5'-cyclic AMP + diphosphate., cofactor: Binds 2 magnesium ions per subunit., enzyme regulation: Activated by calcium/calmodulin., function: This is a membrane-bound, calcium-stimulable adenylyl cyclase. May be involved in learning, in memory and in drug dependence., similarity: Belongs to the adenylyl cyclase class-4/guanylyl cyclase family., similarity: Contains 2 guanylate cyclase domains.,

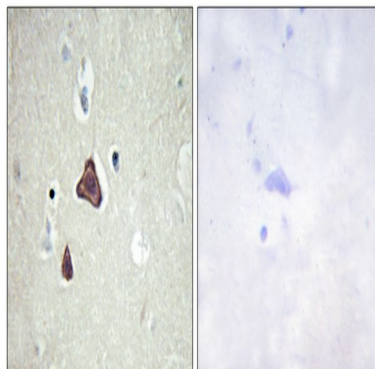
## Research Area

Purine metabolism; Calcium; Chemokine; Oocyte meiosis; Vascular smooth muscle contraction; Gap junction; Long-term potentiation; Taste transduction; GnRH; Progesterone-mediated oocyte maturation; Melanogenesis; Dilated cardiomyopathy;

## Image Data



Immunofluorescence analysis of A549 cells, using ADCY8 Antibody. The picture on the right is blocked with the synthesized peptide.





**Product Name: A Cyclase VIII Rabbit Polyclonal  
Antibody**  
**Catalog #: APRab06358**

---

Immunohistochemistry analysis of paraffin-embedded human brain tissue, using ADCY8 Antibody. The picture on the right is blocked with the synthesized peptide.

**Note**

For research use only.