

Summary

Production Name	4E-BP1 Rabbit Polyclonal Antibody
Description	Rabbit Polyclonal Antibody
Host	Rabbit
Application	IHC,IF,ELISA
Reactivity	Human,Mouse,Rat

Performance

Conjugation	Unconjugated
Modification	Unmodified
Isotype	IgG
Clonality	Polyclonal
Form	Liquid
Storage	Store at 4°C short term. Aliquot and store at -20°C long term. Avoid freeze/thaw cycles.
Buffer	Liquid in PBS containing 50% glycerol, 0.5% BSA and 0.02% New type preservative N.
Purification	Affinity purification

Immunogen

Gene Name	EIF4EBP1 EIF4EBP1; Eukaryotic translation initiation factor 4E-binding protein 1; 4E-BP1; eIF4E-binding protein 1; Phosphorylated heat- and acid-stable protein regulated by insulin 1;
Alternative Names	PHAS-I
Gene ID	1978.0
SwissProt ID	Q13541.The antiserum was produced against synthesized peptide derived from human 4E-BP1. AA range:2-51

Application

Dilution Ratio	IHC 1:100 - 1:300. IF 1:200 - 1:1000. ELISA: 1:5000. Not yet tested in other applications.
Molecular Weight	

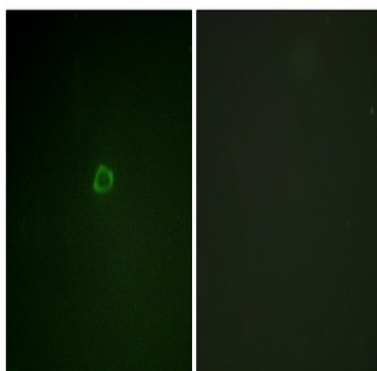
Background

eukaryotic translation initiation factor 4E binding protein 1(EIF4EBP1) Homo sapiens This gene encodes one member of a family of translation repressor proteins. The protein directly interacts with eukaryotic translation initiation factor 4E (eIF4E), which is a limiting component of the multisubunit complex that recruits 40S ribosomal subunits to the 5' end of mRNAs. Interaction of this protein with eIF4E inhibits complex assembly and represses translation. This protein is phosphorylated in response to various signals including UV irradiation and insulin signaling, resulting in its dissociation from eIF4E and activation of mRNA translation. [provided by RefSeq, Jul 2008],function:Regulates eIF4E activity by preventing its assembly into the eIF4F complex. Mediates the regulation of protein translation by hormones, growth factors and other stimuli that signal through the MAP kinase pathway.,PTM:Phosphorylated on serine and threonine residues in response to insulin, EGF and PDGF. Phosphorylated upon DNA damage, probably by ATM or ATR.,similarity:Belongs to the eIF4E-binding protein family.,subunit:Nonphosphorylated EIF4EBP1 competes with EIF4G1/EIF4G3 to interact with EIF4E; insulin stimulated MAP-kinase (MAPK1 and MAPK3) phosphorylation of EIF4EBP1 causes dissociation of the complex allowing EIF4G1/EIF4G3 to bind and consequent initiation of translation. Rapamycin can attenuate insulin stimulation, mediated by FKBP.,

Research Area

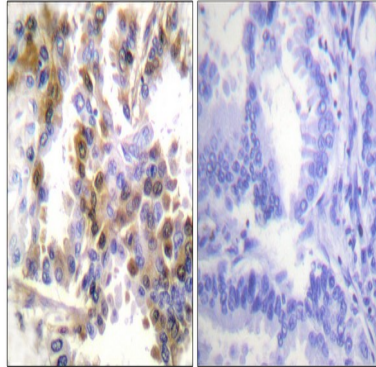
Regulates Angiogenesis; Insulin Receptor; mTOR; ErbB/HER; PI3K/Akt; AMPK

Image Data



Immunofluorescence analysis of A549 cells, using 4E-BP1 Antibody. The picture on the right is blocked with the synthesized peptide.

Product Name: 4E-BP1 Rabbit Polyclonal Antibody
Catalog #: APRab06333



Immunohistochemistry analysis of paraffin-embedded human lung carcinoma tissue, using 4E-BP1 Antibody. The picture on the right is blocked with the synthesized peptide.

Note

For research use only.