

Product Name: 4.1G Rabbit Polyclonal Antibody
Catalog #: APRab06322



Summary

Production Name	4.1G Rabbit Polyclonal Antibody
Description	Rabbit Polyclonal Antibody
Host	Rabbit
Application	WB,ELISA
Reactivity	Human,Rat,Mouse

Performance

Conjugation	Unconjugated
Modification	Unmodified
Isotype	IgG
Clonality	Polyclonal
Form	Liquid
Storage	Store at 4°C short term. Aliquot and store at -20°C long term. Avoid freeze/thaw cycles.
Buffer	Liquid in PBS containing 50% glycerol, 0.5% BSA and 0.02% New type preservative N.
Purification	Affinity purification

Immunogen

Gene Name	EPB41L2
Alternative Names	EPB41L2; Band 4.1-like protein 2; Generally expressed protein 4.1; 4.1G
Gene ID	2037.0
SwissProt ID	O43491.Synthesized peptide derived from 4.1G . at AA range: 530-610

Application

Dilution Ratio	WB 1:500 - 1:2000. ELISA: 1:40000
Molecular Weight	112kD

Background

PTM:Phosphorylated upon DNA damage, probably by ATM or ATR.,similarity:Contains 1 FERM domain.,subunit:The CTD

Product Name: 4.1G Rabbit Polyclonal Antibody
Catalog #: APRab06322

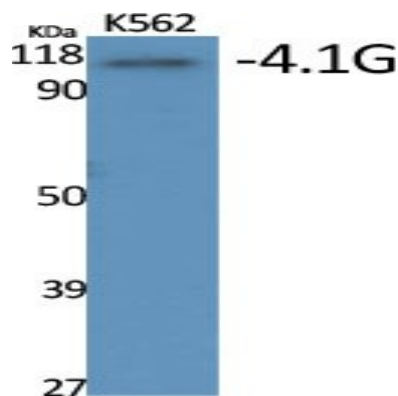


domain interacts with FKBP2 (By similarity). Interacts with FCGR1A.,tissue specificity:Widely expressed.,PTM:Phosphorylated upon DNA damage, probably by ATM or ATR.,similarity:Contains 1 FERM domain.,subunit:The CTD domain interacts with FKBP2 (By similarity). Interacts with FCGR1A.,tissue specificity:Widely expressed.,

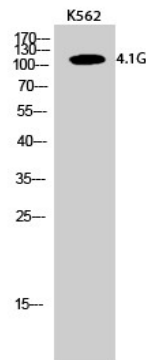
Research Area

Tight junction;

Image Data



Western Blot analysis of various cells using 4.1G Polyclonal Antibody



Western Blot analysis of K562 cells using 4.1G Polyclonal Antibody

Note

For research use only.