

Product Name: 14-3-3 θ/τ Rabbit Polyclonal Antibody
Catalog #: APRab06286



Summary

Production Name	14-3-3 θ/τ Rabbit Polyclonal Antibody
Description	Rabbit Polyclonal Antibody
Host	Rabbit
Application	IF, WB, ELISA
Reactivity	Human, Mouse, Rat

Performance

Conjugation	Unconjugated
Modification	Unmodified
Isotype	IgG
Clonality	Polyclonal
Form	Liquid
Storage	Store at 4°C short term. Aliquot and store at -20°C long term. Avoid freeze/thaw cycles.
Buffer	Liquid in PBS containing 50% glycerol, 0.5% BSA and 0.02% New type preservative N.
Purification	Affinity purification

Immunogen

Gene Name	YWHAQ
Alternative Names	YWHAQ; 14-3-3 protein theta; 14-3-3 protein T-cell; 14-3-3 protein tau; Protein HS1
Gene ID	10971.0
SwissProt ID	P27348. The antiserum was produced against synthesized peptide derived from human 14-3-3 thet/tau. AA range: 196-245

Application

Dilution Ratio	WB 1:500 - 1:2000. IF 1:200 - 1:1000. ELISA: 1:5000. Not yet tested in other applications.
Molecular Weight	28kD

Background

Product Name: 14-3-3 θ/τ Rabbit Polyclonal Antibody
Catalog #: APRab06286

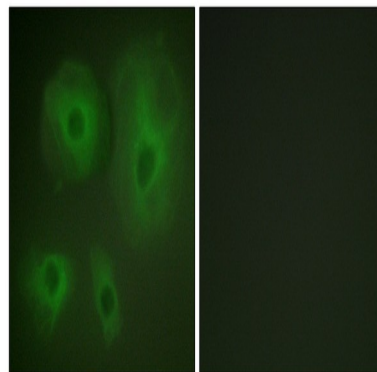


This gene product belongs to the 14-3-3 family of proteins which mediate signal transduction by binding to phosphoserine-containing proteins. This highly conserved protein family is found in both plants and mammals, and this protein is 99% identical to the mouse and rat orthologs. This gene is upregulated in patients with amyotrophic lateral sclerosis. It contains in its 5' UTR a 6 bp tandem repeat sequence which is polymorphic, however, there is no correlation between the repeat number and the disease. [provided by RefSeq, Jul 2008],function:Adapter protein implicated in the regulation of a large spectrum of both general and specialized signaling pathway. Binds to a large number of partners, usually by recognition of a phosphoserine or phosphothreonine motif. Binding generally results in the modulation of the activity of the binding partner.,similarity:Belongs to the 14-3-3 family.,subcellular location:In neurons, axonally transported to the nerve terminals.,subunit:Homodimer. Interacts with PCTK1 (By similarity). Interacts with SSH1. Interacts with CDKN1B ('Thr-198' phosphorylated form); the interaction translocates CDKN1B to the cytoplasm.,tissue specificity:Abundantly expressed in brain, heart and pancreas, and at lower levels in kidney and placenta. Up-regulated in the lumbar spinal cord from patients with sporadic amyotrophic lateral sclerosis (ALS) compared with controls, with highest levels of expression in individuals with predominant lower motor neuron involvement.,

Research Area

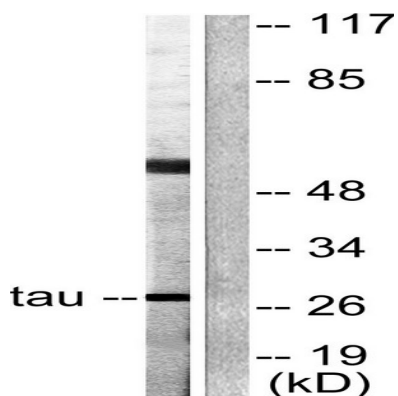
Cell_Cycle_G1S;Cell_Cycle_G2M_DNA;Oocyte meiosis;Neurotrophin;Pathogenic Escherichia coli infection;

Image Data



Immunofluorescence analysis of HeLa cells, using 14-3-3 θ/τ Antibody. The picture on the right is blocked with the synthesized peptide.

Product Name: 14-3-3 θ/τ Rabbit Polyclonal Antibody
Catalog #: APRab06286



Western blot analysis of lysates from HeLa cells, using 14-3-3 θ/τ Antibody. The lane on the right is blocked with the synthesized peptide.



Western Blot analysis of various cells using 14-3-3 θ/τ Polyclonal Antibody diluted at 1: 500

Note

For research use only.