

## Summary

<b>Production Name</b>	14-3-3 $\beta$ Rabbit Polyclonal Antibody
<b>Description</b>	Rabbit Polyclonal Antibody
<b>Host</b>	Rabbit
<b>Application</b>	WB,
<b>Reactivity</b>	Human,Mouse,Rat

## Performance

<b>Conjugation</b>	Unconjugated
<b>Modification</b>	Unmodified
<b>Isotype</b>	IgG
<b>Clonality</b>	Polyclonal
<b>Form</b>	Liquid
<b>Storage</b>	Store at 4°C short term. Aliquot and store at -20°C long term. Avoid freeze/thaw cycles.
<b>Buffer</b>	Liquid in PBS containing 50% glycerol, 0.5% BSA and 0.02% New type preservative N.
<b>Purification</b>	Affinity purification

## Immunogen

<b>Gene Name</b>	YWHAB
<b>Alternative Names</b>	YWHAB; 14-3-3 protein beta/alpha; Protein 1054; Protein kinase C inhibitor protein 1; KCIP-1
<b>Gene ID</b>	7529.0
<b>SwissProt ID</b>	P31946.The antiserum was produced against synthesized peptide derived from human 14-3-3 beta. AA range:41-90

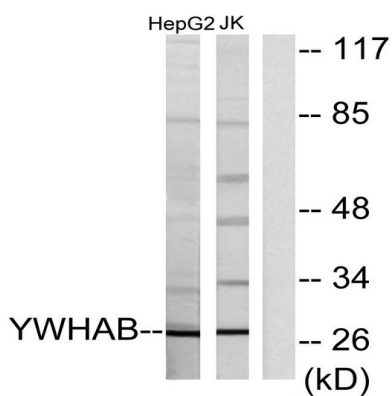
## Application

<b>Dilution Ratio</b>	WB: 1/500 - 1/2000. ELISA: 1/10000.
<b>Molecular Weight</b>	

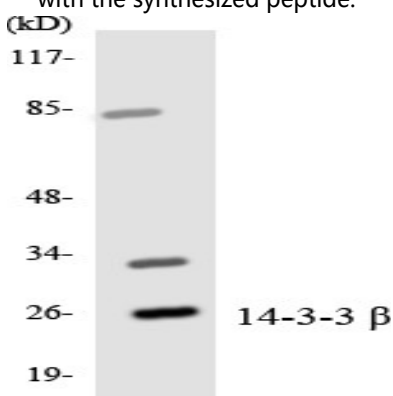
## Background

## Research Area

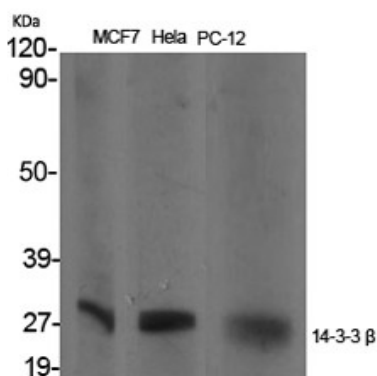
## Image Data



Western blot analysis of lysates from HepG2 and Jurkat cells, using 14-3-3 beta Antibody. The lane on the right is blocked with the synthesized peptide.

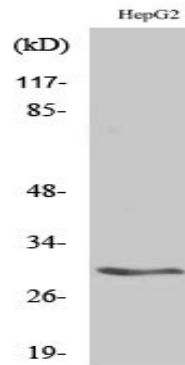


Western blot analysis of the lysates from HepG2 cells using 14-3-3  $\beta$  antibody.



Western Blot analysis of various cells using 14-3-3  $\beta$  Polyclonal Antibody

**Product Name: 14-3-3  $\beta$  Rabbit Polyclonal Antibody**  
**Catalog #: APRab06278**



Western Blot analysis of Jurkat cells using 14-3-3  $\beta$  Polyclonal Antibody

**Note**

For research use only.