
Summary

Production Name	11 β -HSD1 Rabbit Polyclonal Antibody
Description	Rabbit Polyclonal Antibody
Host	Rabbit
Application	WB,IHC,ELISA
Reactivity	Human,Mouse,Rat

Performance

Conjugation	Unconjugated
Modification	Unmodified
Isotype	IgG
Clonality	Polyclonal
Form	Liquid
Storage	Store at 4°C short term. Aliquot and store at -20°C long term. Avoid freeze/thaw cycles.
Buffer	Liquid in PBS containing 50% glycerol, 0.5% BSA and 0.02% New type preservative N.
Purification	Affinity purification

Immunogen

Gene Name	HSD11B1
Alternative Names	HSD11B1; HSD11; HSD11L; Corticosteroid 11-beta-dehydrogenase isozyme 1; 11-beta-hydroxysteroid dehydrogenase 1; 11-DH; 11-beta-HSD1
Gene ID	3290.0
SwissProt ID	P28845.Synthesized peptide derived from 11 β -HSD1 . at AA range: internal

Application

Dilution Ratio	WB:1/500 - 1/2000. IHC: 1:100-1:300. ELISA: 1/10000. Not yet tested in other applications.
-----------------------	--

Molecular Weight

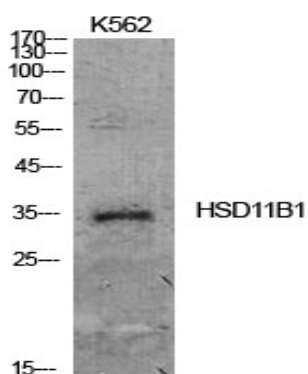
Product Name: 11 β -HSD1 Rabbit Polyclonal Antibody
Catalog #: APRab06272



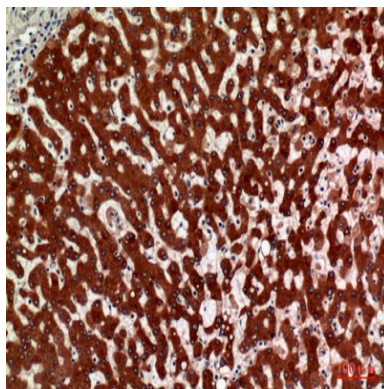
Background

Research Area

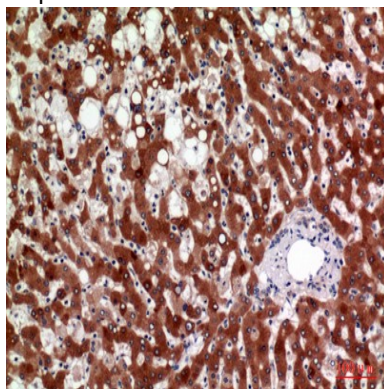
Image Data



Western Blot analysis of K562 cells using 11 β -HSD1 Polyclonal Antibody. Antibody was diluted at 1:500. Secondary antibody was diluted at 1:20000

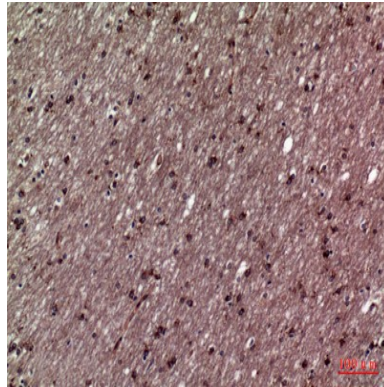


Immunohistochemical analysis of paraffin-embedded human-liver, antibody was diluted at 1:100

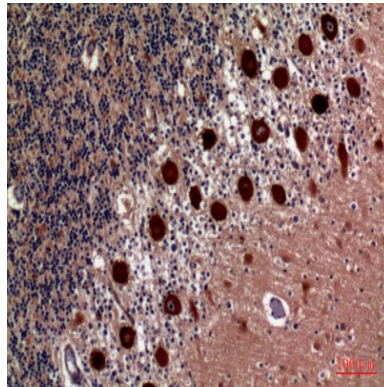


Immunohistochemical analysis of paraffin-embedded human-liver, antibody was diluted at 1:100

Product Name: 11 β -HSD1 Rabbit Polyclonal Antibody
Catalog #: APRab06272



Immunohistochemical analysis of paraffin-embedded human-brain, antibody was diluted at 1:100



Immunohistochemical analysis of paraffin-embedded human-brain, antibody was diluted at 1:100

Note

For research use only.