

Product Name: EF-1 α 1/2 (Acetyl Lys41) Rabbit Polyclonal Antibody
Catalog #: APRab06187

Summary

Production Name	EF-1 α 1/2 (Acetyl Lys41) Rabbit Polyclonal Antibody
Description	Rabbit Polyclonal Antibody
Host	Rabbit
Application	WB,ELISA
Reactivity	Human,Mouse,Rat

Performance

Conjugation	Unconjugated
Modification	Acetyl Antibody
Isotype	IgG
Clonality	Polyclonal
Form	Liquid
Storage	Store at 4°C short term. Aliquot and store at -20°C long term. Avoid freeze/thaw cycles.
Buffer	Liquid in PBS containing 50% glycerol, 0.5% BSA and 0.02% New type preservative N.
Purification	Affinity purification

Immunogen

Gene Name	EEF1A1/EEF1A2/EEF1A1P5 EEF1A1; EEF1A; EF1A; LENG7; Elongation factor 1-alpha 1; EF-1-alpha-1; Elongation factor Tu; EF-Tu; Eukaryotic elongation factor 1 A-1; eEF1A-1; Leukocyte receptor cluster member 7; EEF1A2; EEF1AL; STN; Elongation factor 1-alpha 2; EF-1-alpha-2;Eukaryotic elongation factor 1 A-2; eEF1A-2; Statin-S1; EEF1A1P5; EEF1AL3; Putative elongation factor 1-alpha-like 3; EF-1-alpha-like 3; Eukaryotic elongation factor 1 A-like 3; eEF1A-like 3; Eukaryotic translation elongation factor 1 alpha-1 pseudogene 5
Alternative Names	
Gene ID	1915.0
SwissProt ID	P68104.The antiserum was produced against synthesized Acetyl-peptide derived from human EEF1A around the Acetylation site of Lys41. AA range:1-50

Application

Product Name: EF-1 α 1/2 (Acetyl Lys41) Rabbit Polyclonal Antibody
Catalog #: APRab06187

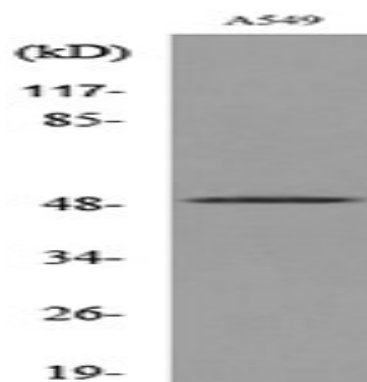
Dilution Ratio WB 1:500 - 1:2000. ELISA: 1:20000. Not yet tested in other applications.
Molecular Weight 50kD

Background

This gene encodes an isoform of the alpha subunit of the elongation factor-1 complex, which is responsible for the enzymatic delivery of aminoacyl tRNAs to the ribosome. This isoform (alpha 1) is expressed in brain, placenta, lung, liver, kidney, and pancreas, and the other isoform (alpha 2) is expressed in brain, heart and skeletal muscle. This isoform is identified as an autoantigen in 66% of patients with Felty syndrome. This gene has been found to have multiple copies on many chromosomes, some of which, if not all, represent different pseudogenes. [provided by RefSeq, Jul 2008],caution:Could be the product of a pseudogene.,function:This protein promotes the GTP-dependent binding of aminoacyl-tRNA to the A-site of ribosomes during protein biosynthesis.,similarity:Belongs to the GTP-binding elongation factor family. EF-Tu/EF-1A subfamily.,subunit:Found in a nuclear export complex with XPO5, EEF1A1, Ran and aminoacylated tRNA. Interacts with XPO5. May interact with ERGIC2.,tissue specificity:Brain, placenta, lung, liver, kidney, pancreas but barely detectable in heart and skeletal muscle.,

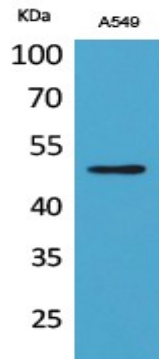
Research Area

Image Data

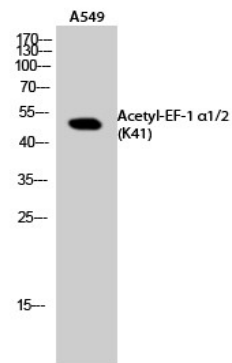


Western blot analysis of lysate from A549 cells, using EEF1A-pan (Acetyl-Lys41) Antibody.

Product Name: EF-1 α 1/2 (Acetyl Lys41) Rabbit Polyclonal Antibody
Catalog #: APRab06187



Western Blot analysis of A549 cells using Acetyl-EF-1 α 1/2 (K41) Polyclonal Antibody.. Secondary antibody was diluted at 1:20000



Western Blot analysis of A549 cells using Acetyl-EF-1 α 1/2 (K41) Polyclonal Antibody. Secondary antibody was diluted at 1:20000

Note

For research use only.