

Product Name: XPA (Phospho-Ser196) Rabbit Polyclonal Antibody
Catalog #: APRab06115

Summary

Production Name	XPA (Phospho-Ser196) Rabbit Polyclonal Antibody
Description	Rabbit Polyclonal Antibody
Host	Rabbit
Application	WB
Reactivity	Human,Mouse,Rat

Performance

Conjugation	Unconjugated
Modification	Phospho Antibody
Isotype	IgG
Clonality	Polyclonal
Form	Liquid
Storage	Store at 4°C short term. Aliquot and store at -20°C long term. Avoid freeze/thaw cycles.
Buffer	Liquid in PBS containing 50% glycerol, 0.5% BSA and 0.02% New type preservative N.
Purification	Affinity purification

Immunogen

Gene Name	XPA XPAC
Alternative Names	DNA repair protein complementing XP-A cells (Xeroderma pigmentosum group A-complementing protein)
Gene ID	7507.0
SwissProt ID	P23025.

Application

Dilution Ratio	WB 1:500-2000
Molecular Weight	30kD

Background

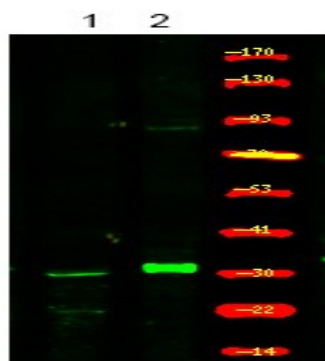
Product Name: XPA (Phospho-Ser196) Rabbit Polyclonal Antibody
Catalog #: APRab06115



disease: Defects in XPA are a cause of xeroderma pigmentosum complementation group A (XP-A) [MIM:278700]; also known as xeroderma pigmentosum type 1 (XP1). XP-A is a rare human autosomal recessive disease characterized by solar sensitivity, high predisposition for developing cancers on areas exposed to sunlight and, in some cases, neurological abnormalities. Group A patients show the most severe skin symptoms and progressive neurological disorders.,function: Involved in DNA excision repair. Initiates repair by binding to damaged sites with various affinities, depending on the photoproduct and the transcriptional state of the region. Required for UV-induced CHK1 phosphorylation and the recruitment of CEP164 to cyclobutane pyrimidine dimers (CPD), sites of DNA damage after UV irradiation.,PTM: Phosphorylated upon DNA damage, probably by ATM or ATR.,similarity: Belongs to the XPA family.,subunit: Interacts with XAB1 and RPA1. Interacts (via N-terminus) with CEP164 upon UV irradiation.,tissue specificity: Expressed in various cell lines and in skin fibroblasts.,

Research Area

Image Data



Western Blot analysis of 1 HeLa cell, 2 Serum-free treated ,using primary antibody at 1:1000 dilution. Secondary antibody was diluted at 1:10000

Note

For research use only.